

DIFFERENTIAL PRESSURE TRANSMITTER USER MANUAL



Introduction

3351DPT Series Digital. Intelligent pressure/Differential pressure Transmitter is a multipurpose digitalized intelligent instrument developed by our company, including capacitance pressure / differential pressure transmitter and direct-coupled pressure/fluid level transmitter. It is made on the basis of the mature and dependable sensing technology, combining exchange technology.

16-bit single chip is adopted as its core element, with its powerful function and high-speed calculation capacity ensuring the excellent quality of the transmitter. The whole design frame focuses on its dependability, stability and high precision and intelligentization, meeting the growing demand in on-site industrial use. To get this goal, digitalized signal processing technology is used in the software to ensure its disturbance capacity and zero point stability. Meanwhile, it has the zero stability capacity (ZSC) and Temperature supplementing capacity (TSC).

The powerful interface functions guarantees an excellent interactivity with no need of manual operator. Its digitalized meter head can display 3 physical parameter including pressure, temperature and current, and 0-100% analogue indications. Keystroke operation can finish the basic settings of zero transfer, range setting, damping setting under the circumstance of no standard pressure, greatly convenient for the onsite debugging.

S-PORT serial communication port can communicate with the computer through the special purposed interconnection module, while the upper computer interface can finish more functions than the keystroke operation. By connection with module RS485, it can realize the remote transmission of digital signal, or in the building up of RS485 industrial LAN.

3351DPT series digitalized intelligent pressure /Different Pressures Transmitter has the optional HART module. After the transmitter is added the HART module, it has HART communication capacity, with the conventional operation being controlled with the general manual operator. The special communication equipment and software provided by our company can operator the marking and temperature supplementation actions.

3351DPT series digitalized intelligent pressure /Different Pressures Transmitter can be widely used in the sectors such as petroleum, chemical, iron& steel, power supply, light industry and environmental protection, capable of realizing the measurement of various pressures, differential pressure, flows and fluids, adaptable for all kinds of harsh and hazardous environment and corrosive agents.



1. overview

1.1 3351DPT series digit. Intelligent pressure/differential pressure transmitter

1.1.1 Integral appearance

Length/width/height/quality (no accessories): 98mm/78mm/169mm/2.4kg

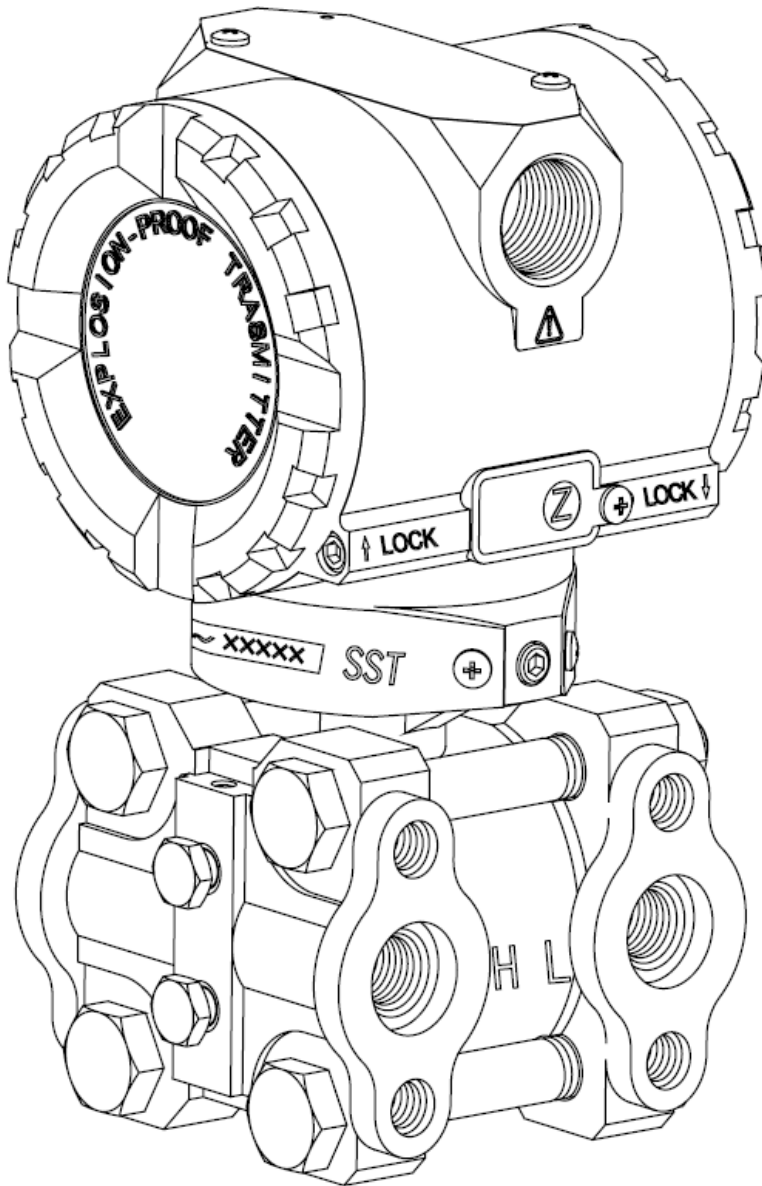


Fig1.1



1.1.2 Integral structure

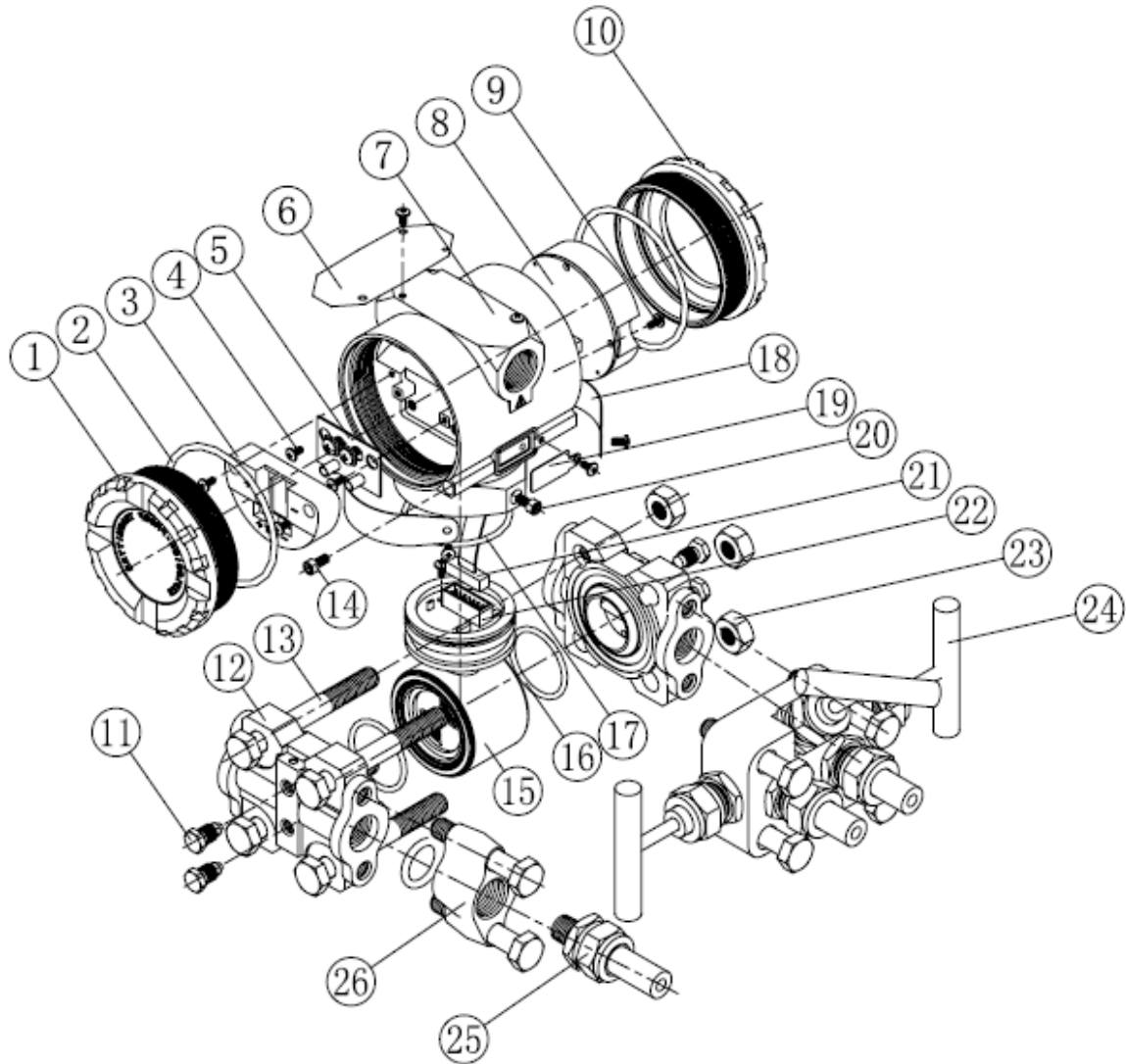


Fig 1-2



1	Cover removal	2	O- ring	3	Wiring terminal cover	4	Mounting bolts of circuit board	5	Thunder-proof wiring circuit board
6	Name plate	7	Housing body	8	Meter head	9	Mounting bolts of meter head	10	Meter head cover
11	Drain/vent valve	12	Template	13	Bolt M10	14	Cover lock bolt	15	Sensor
16	O-ring	17	O-ring	18	Position code plate	19	Zero alignment plate	20	Housing body lockup bolt
21	Parallel Wires	22	Circuit board	23	Nut M10	24	Integrated 3-valve group (optional)	25	Welded connector (optional)
26	Flange (optional)								

1.1.3 Introduction to working principle

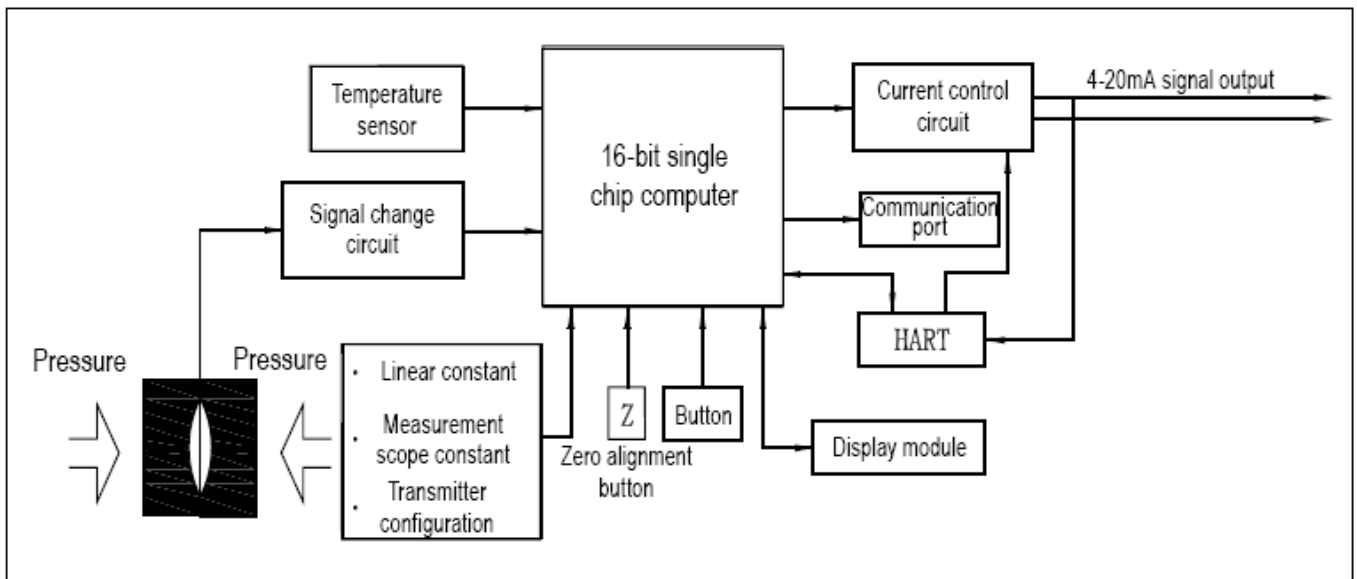


Fig 1-3



As indicated in the working principle diagram fig 1-3, the outside pressure or differential pressure will cause some change in the sensor capacitance value. Through the digital signal conversion, it will change into the frequency signal, which is sent to the microprocessor. After the calculation by microprocessor, a current control signal will be output to the current control circuit, converted into analogue 4-20 mA current output. Meanwhile, the microprocessor is responsible for the interactive and other actions (display and setting). The communication port used for digital communication needs the special port of our company. HART module will realize the transmitter HART communication.

1.2 3351DPT digital. Intelligent direct-coupled pressure/fluid level transmitter

Integral appearance and structure

1) 3351DPT2001 Integral appearance

Length/width/height/quality (no accessories):98mm/78mm/152mm/0.75kg

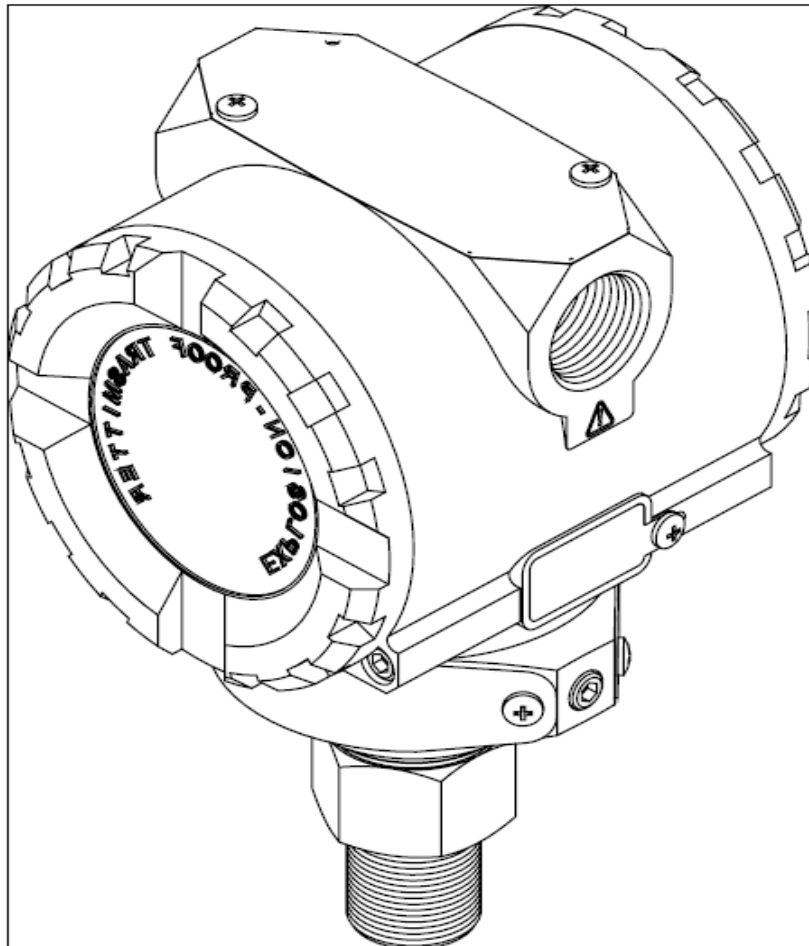


Fig 1-4



2) 3351DPT2138 Integral appearance

Length/width/height/quality (no accessories):98mm/78mm/131+ (wire length)
mm/0.75kg (varied in weight for different types)

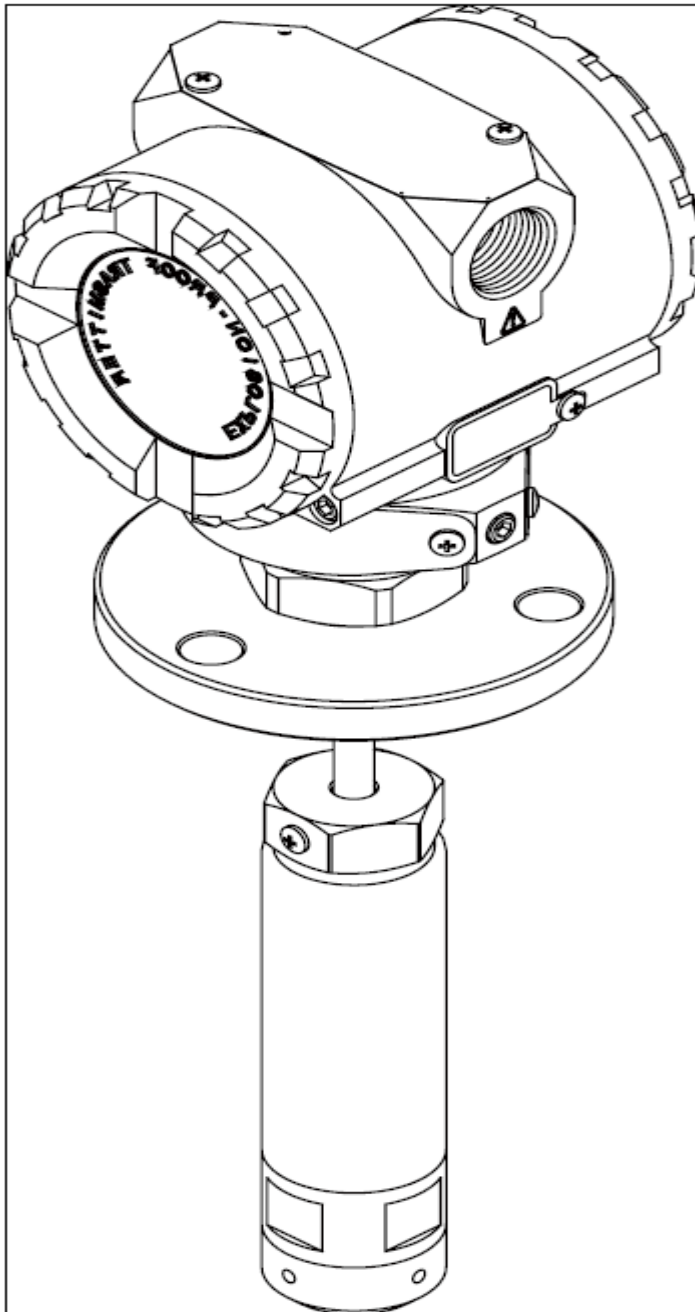


Fig 1-5

1.2.2 Introduction to working principle

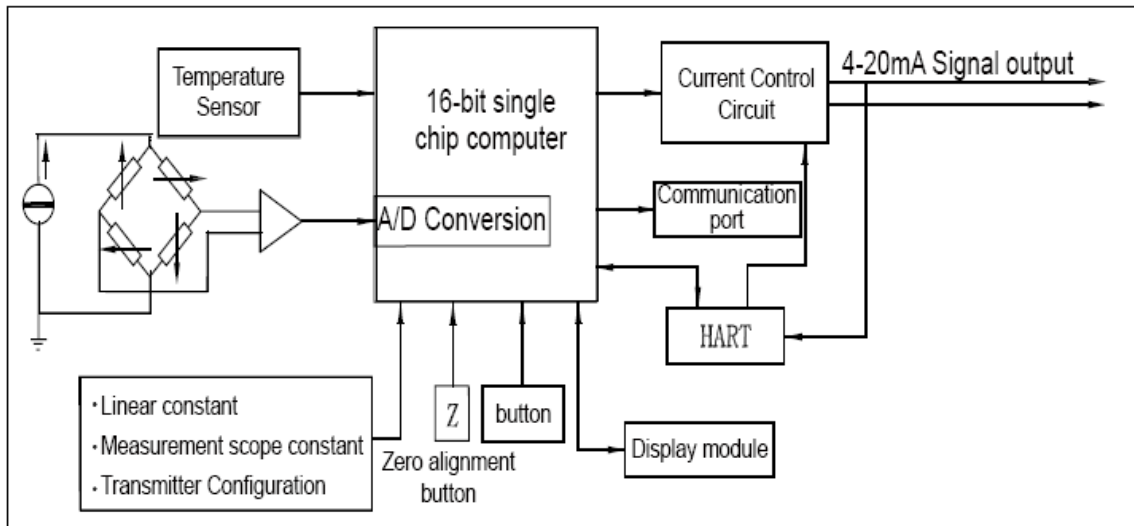


Fig 1-6

As indicated in the working principle diagram fig.1-3, the outside pressure or differential pressure will cause some changes in the sensor resistance value and the output value of bridge voltage. Through A/D conversion, it will change into the digital signal which is sent to the microprocessor for calculation; then a current control signal will be output to the current control circuit, converted into analogue 4-20 mA current output. Meanwhile, the microprocessor is responsible for the interactive and other actions (display and setting). The communication port used for digital communication needs the special port of our company. HART module will realize the transmitter HART communication.



2. MOUNTING FOR USE

2.1 3351DPT series digital. Intelligent pressure/ differential pressure transmitter

2.1.1 integral appearance dimensional drawing

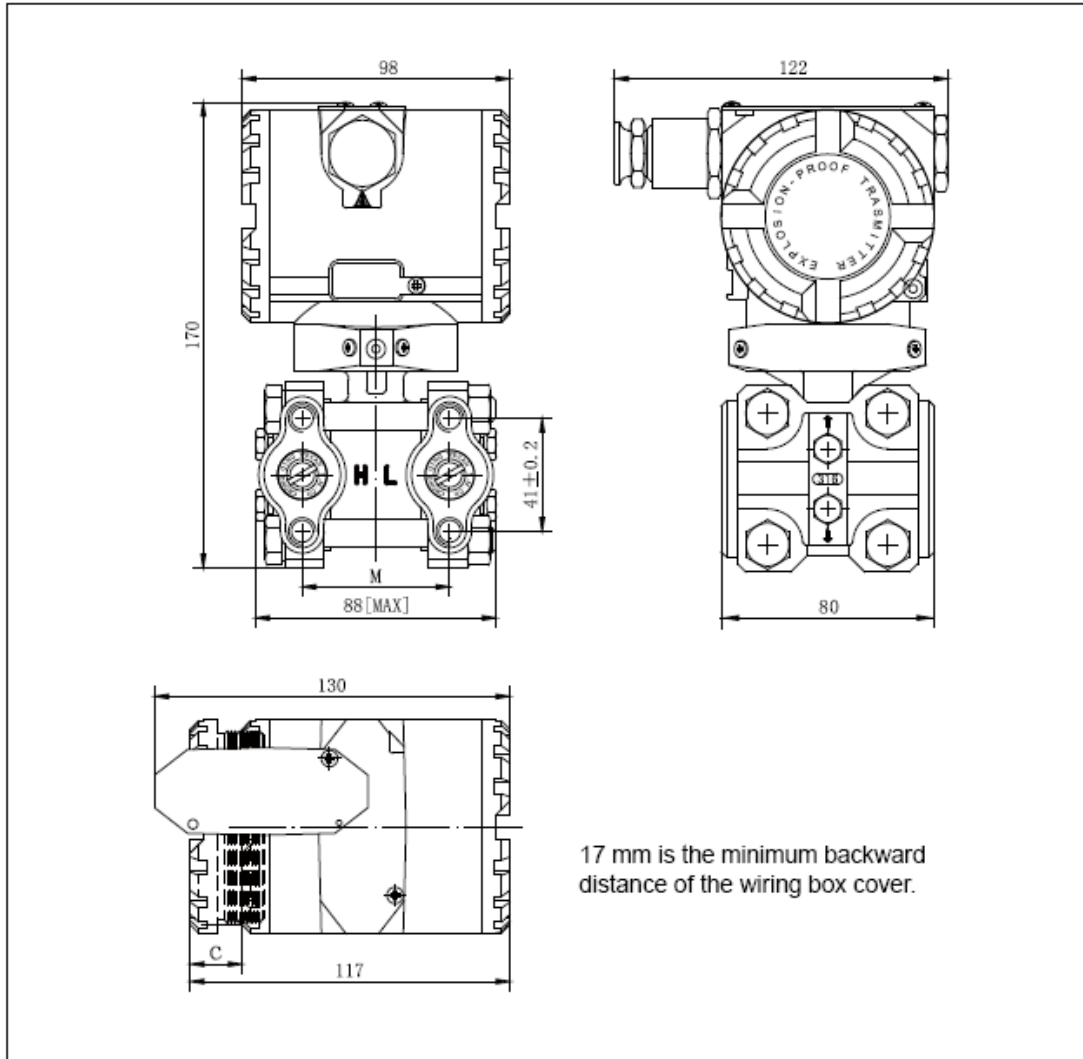


Fig 2-1

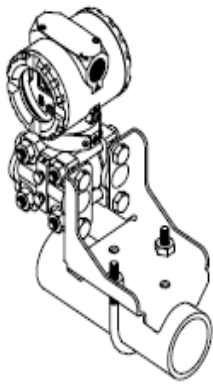
M	Model	1200	1300	1400	1500	1600	1700	1800	1900	1000
	Size(mm)	54			55.6		57.2	58.4	59.2	

2.1.2 On-site mounting

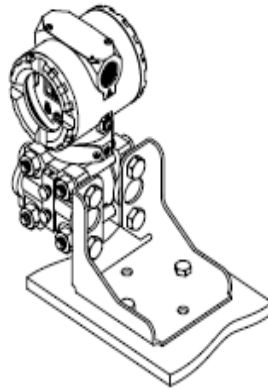


1) mounting steps

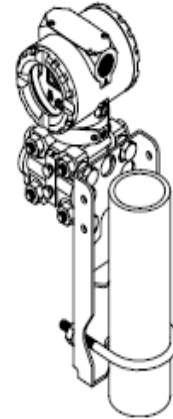
The transmitter can be directly mounted onto the 2- inch conduit or onto the wall and the meter panel. (See fig: 2-2.)



B1 conduit curve bracket



B2 plate curve bracket



B3 conduit flat bracket

Fig. 2-2

After realizing the bolt, electronics housing can be rotated 90° to the left and right.
Warning: never exceed 90° to avoid the inside parallel wires breaking

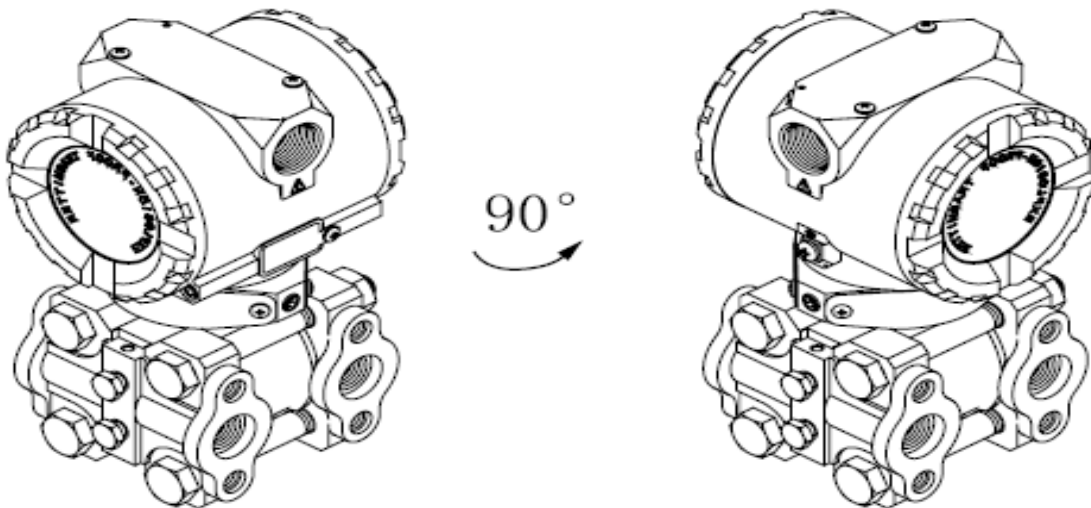


Fig.2-3

2) way of pressure impulse



There are 3 kinds of ways of pressure impulse:

Joint Flange Way
(Ordering Code G1)

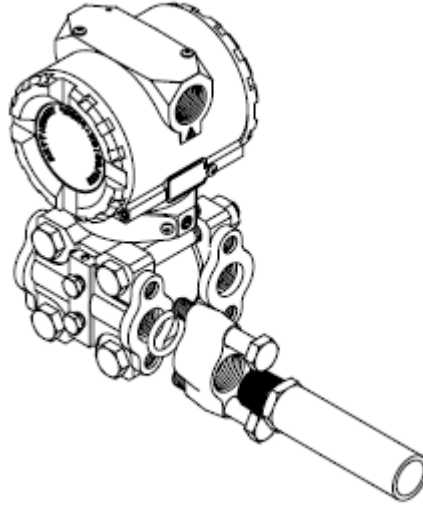


Fig 2-4

Weld conduit connector

(Ordering code G2)

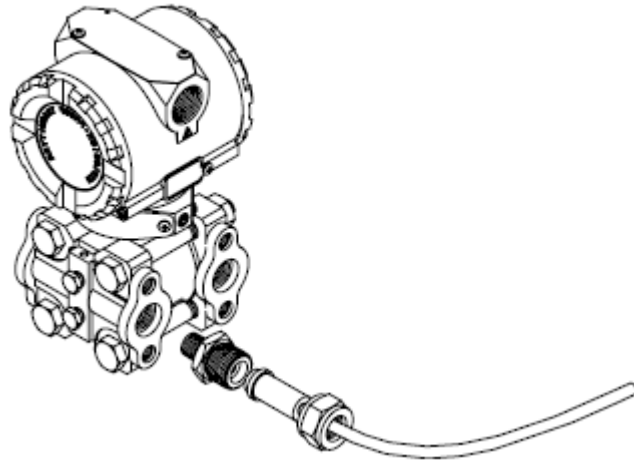


Fig. 2-5



Integral 3-valve group
(Ordering Code G3)

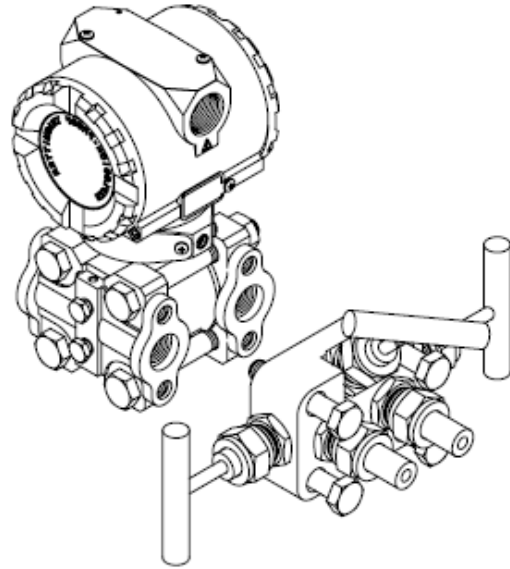


Fig. 2-6

Notes: pressure transmitter uses one terminal (H or L), with another terminal for reference only.

3) vent/drain valve

Usually, vent/drain valve should all be locked up, and only put in use in need of discharge gas/fluids; our company has the default configuration standard of up/down vent/drain valve.

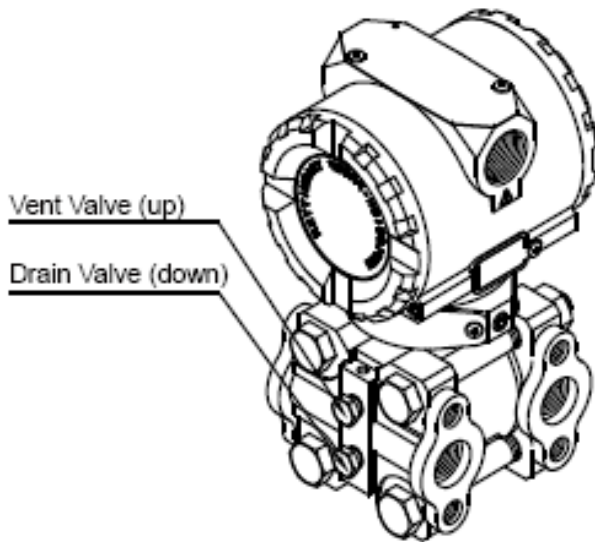
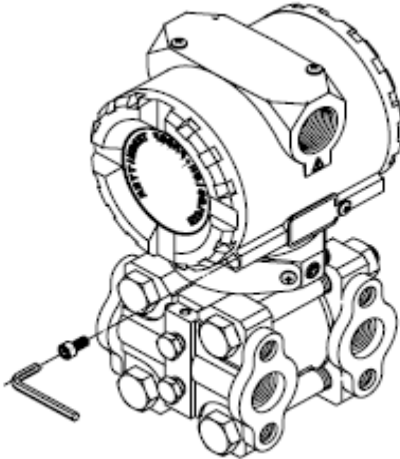


Fig. 2-7

4) cover lock

Screw down the bolt to open up the; release the bolt to lock up the cover. Usually, the





cover should be ensured of being screwing down to avoid its inside being damaged.

Fig 2-8

5) process connection orifice distance adjustment

The process connection orifice on the pressure capacity room us NPT1/4-18. It is required to seal these orifices. In the use of the joint flange connector, dismantling the upper and lower bolts of the connector can easily disassembly the transmitter from the production unit. The center distance between 2 process connection orifices is 54mm. the center distance can vary in the range of 50.8mm, 54mm, and 57.2mm by the joint flange connector as indicated as the following fig.

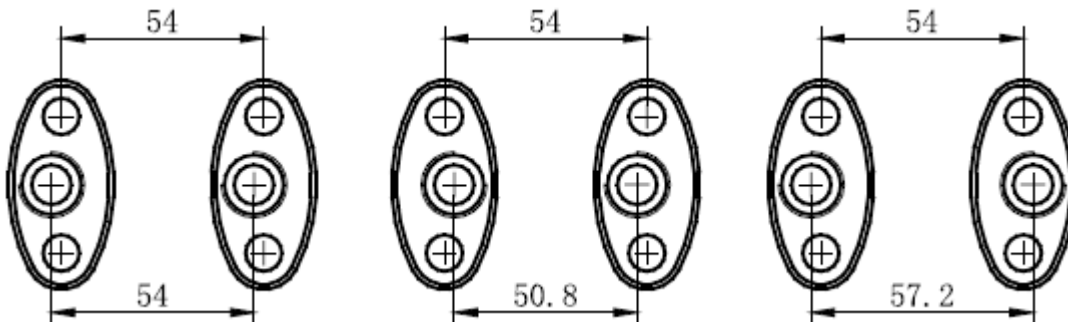


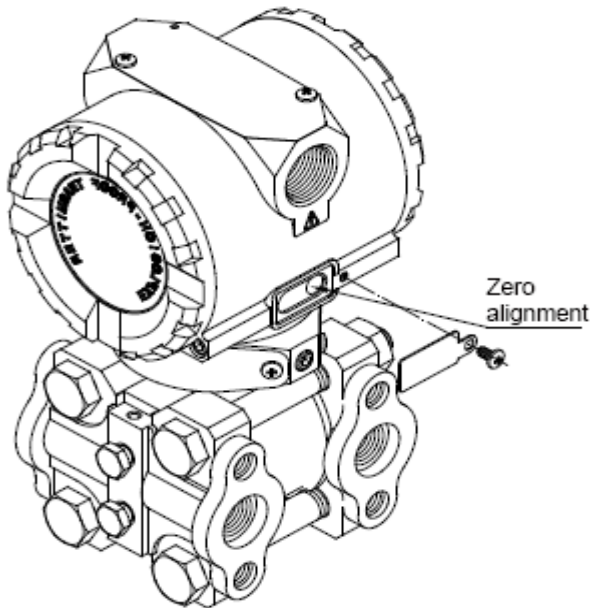
Fig 2-9

6) Mounting and calibration

Due to the gravity of the diaphragm and silicone oil, the transmitter failing to be mounted in horizontal plane will result in zero deviation (about 240pa in the maximum amount),



and particularly serious for the transmitters with middle low range. Yet it can be calibrated to zero on the site. In operation, there is calibration button on the left side of the housing body of the transmitter. Open the nameplate and keep pressing it down for about for 5 sec to finish the zero alignment. See fig. (2-10)



Special note: please make sure that the transmitter has a zero value of different pressure in zero alignment. Or the transmitter will induct the zero deviation!!!

7) Attention to Mounting Operation

1. Keep the transmitter away from the tested agents such as corrosive or high temperature ($\geq 90^{\circ}\text{C}$).
2. Prevent the sediment from being left in the conduit.
3. Make the pressure conduit as short as possible.
4. The fluid pressure head in both conduits should be kept in balance.
5. The pressure conduit should be mounted where temperature grads and fluctuation area small.
6. Prevent the inside pressure conduit from being crystallized or iced at low temperature.

2.2 3351DPT series digital. Intelligent direct-coupled pressure/ fluid level transmitter

2.2.1 Integral Appearance



3351DPT 2001 Structure Dimensional Drawing

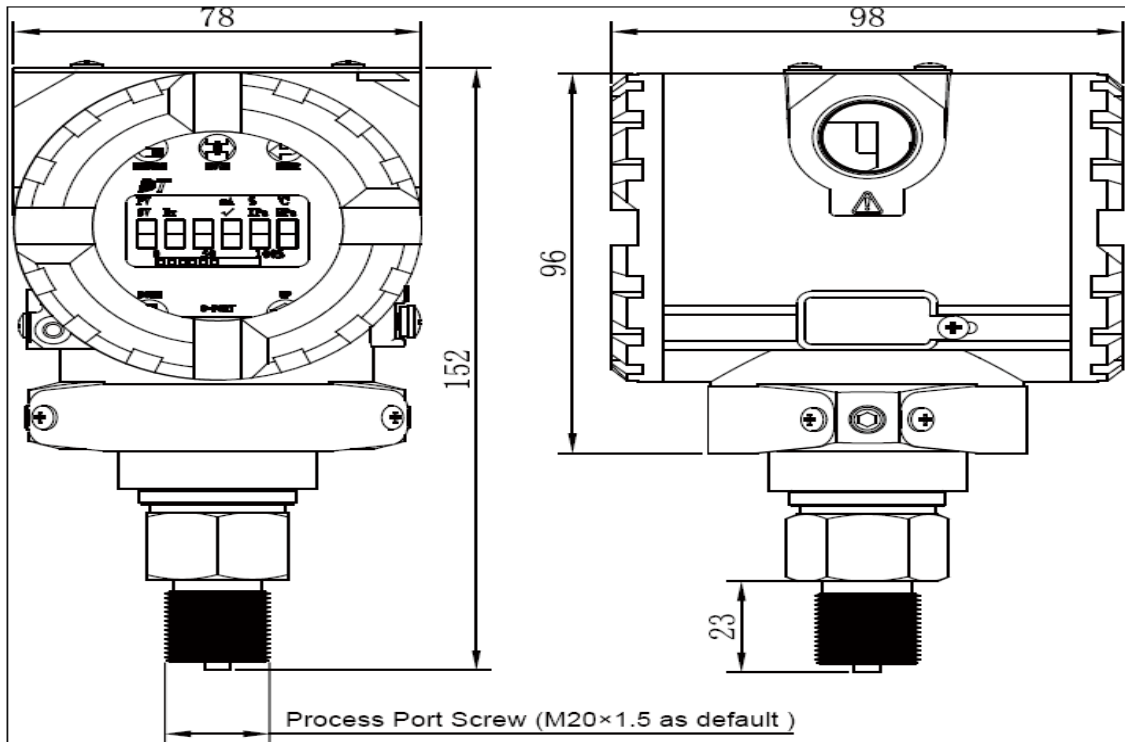


Fig. 2-11

3351DPT 2318 Structure Dimensional Drawing



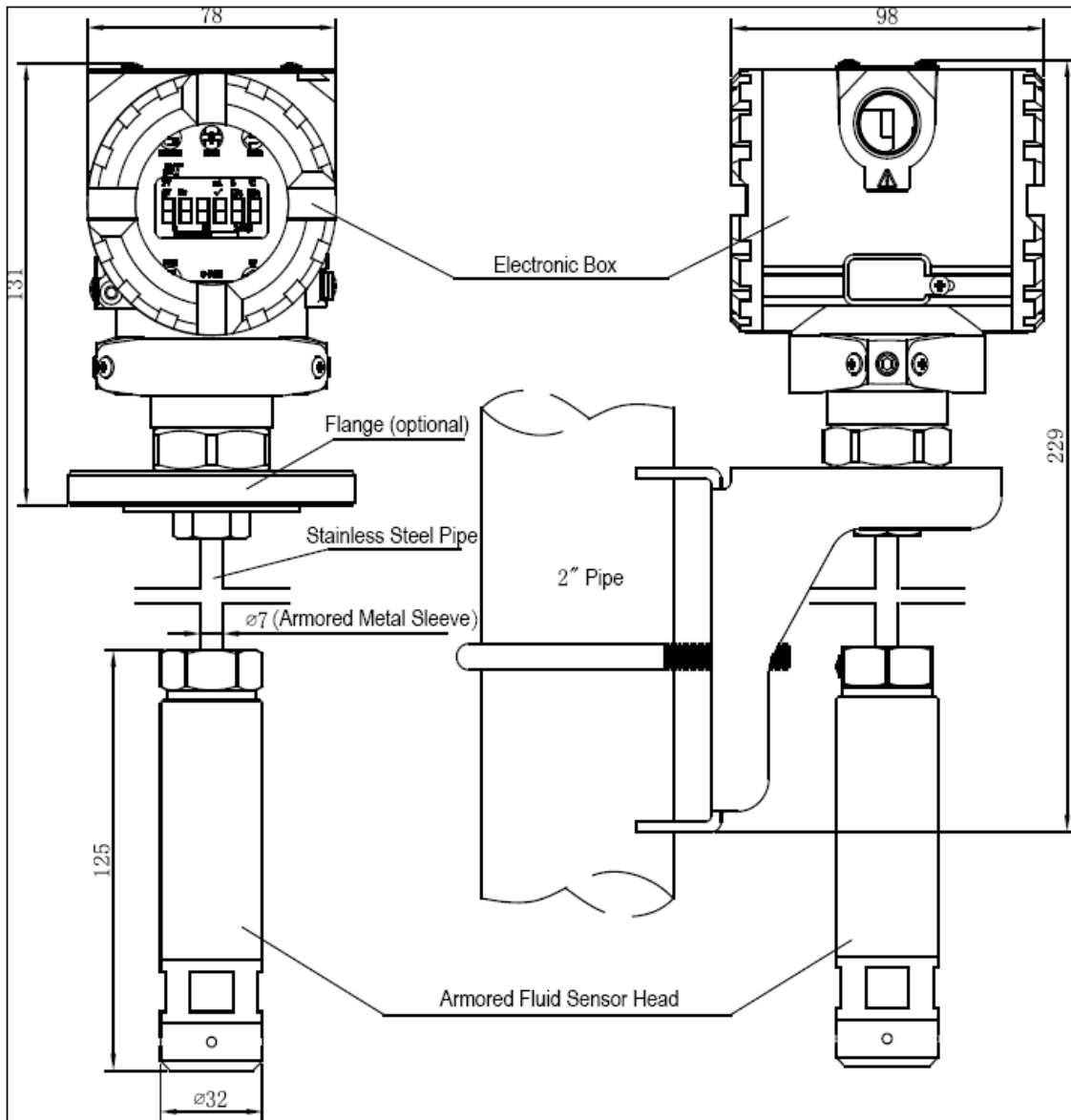


Fig. 2-12

2.2.2 On-site mounting

3351DPT 2001 series direct-coupled pressure transmitter can be directly mounted onto the conduits by use of M20×1.5 or NPT1/2 outer screw, with the screwing moment no more than 30ft-lbs(or 40N.m); 3351DPT 2318 series direct-coupled pressure transmitter



can be put into the fluid for use, optional in 3 mounting ways including local, bracket and flange. Try to mount the transmitter in a place with small temperature difference, and avoid vibration and concussion. When mounting in an open air, try to keep the transmitter in a dry and ventilated place, avoid the strong sunshine and raining, which may result in the decline in the integral performance and longevity. In the process of mounting a transmitter, the following cases are required to take into consideration:

- Prevent the cable from getting direct contact with the strong corrosive agents
- Avoid the sediment or jam of residues inside the probe and pressure impulse conduit
- Pressure impulse conduit should be as short as possible
- The transmitter or pressure impulse conduit should be mounted a place with small temperature difference.

In wiring of the transmitter the signal wire should not go through with other power wires the wiring pipe or groove, nor through the nearly position of the equipment with bigger power. The measurement of steam or other high temperature agents can be done through the process by cooling device. The measurement of steam agent may be done by way of getting the pressure impulse conduit filled with water or other fluids to avoid the direct contact of the transmitter with steam.

2.3 Issues Relating to Measurement Ways

Fluid level measurement:

In the measuring of fluid flow, the pressure tabs should be breached on the side of the process conduit to avoid the sediment of dregs. Meanwhile, the transmitter should be mounted beside or under the pressure tabs, to prevent the air bubbles from being discharged into the process conduit.

Gas Measurement:

In the measurement of gas flow, the pressure tabs should be opened breached at the top or side of the process conduit. And the transmitter should be mounted beside or on the process conduit, to make the collected fluids flow easily into the process conduit.

Steam Measurement:

In the measurement of steam flow, the pressure taps should be opened breached on the side of the process conduit. And the transmitter should be mounted under the process conduit, to make the cooled collected fluid flow into the process conduit



To be noted, in the measurement of steam or other high temperature agents, its temperature should not exceed the limited level for the use of transmitter.

As for the measured agents like steam, the conduit is required to be filled with water to prevent the steam from being direct contact with the transmitter. Thus when the transmitter is in working state, its capacitance variation would be ignored with no need of mounting cooling pot.

The differential pressure transmitter used for measuring the fluid level is a de facto static pressure head for the measurement of fluid bar. This pressure depends on the fluid level and the fluid proportion, with its value equal to the fluid height of the upper part of the pressure taps multiplying the fluid proportion, and irrelevant to the container's volume or form.

Fluid Level Measurement of Breached Container

In this kind measurement, the transmitter is mounted at the bottom near the container so as to measure the corresponding pressure of the upper part of fluid level.

The pressure of the container fluid level acts on the high-pressure side of the transmitter, while its low-pressure side open to the atmosphere. If the lowest value in the range of the tested fluids level is at the upper position of the transmitter mounting location, the transmitter must undergo the positive transfer.

Fluid Level Measurement of Sealed Container

In the sealed container, the pressure P_o of the upper fluid container affects the tested pressure of the container bottom. So the pressure of the container bottom is equal to that the fluid level height multiples the fluid proportion then plus the pressure P_o of the sealed container.

To test the real value of fluid level, it is right to minus the pressure P_o of the container from the tested pressure of the container bottom. For this, a pressure taps should be breached at the container top, and have it connected to the low-pressure side of transmitter. Thus, the pressure inside the container will act on both high and low sides of the transmitter. The result obtained is a direct proportion to the product of the fluid level height multiplying with fluid proportion.

Pressure Impulse Connection Ways

- 1) Dry pressure impulse connection

In the case of the gas on the fluid refuse to condensate, the connection conduit at the low side of transmitter will keep dry. This is so called Dry pressure impulse



connection. The way determining the measure range of transmitter is the same to that of breached container fluid level.

2) Wet pressure impulse connection

In the case of the gas on the fluid getting condensate, there will be a gradual fluid accumulation inside the pressure conduit at the low-pressure side of transmitter, leading to an error on measurement. To avoid this error, certain fluid is filled into the low-pressure side of transmitter beforehand; this is called wet pressure impulse connection.

The above situation will make the transmitter be with a head at the low-pressure side, so a negative transfer is needed.

Decrease Error

Pressure conduit makes transmitter connect with process technic conduit, and transfer the pressure at the pressure taps along the technic conduit to the transmitter. In the process of pressure transmission, the following reasons may cause the errors:

- 1) Leakiness;
- 2) Abrasion loss (particularly in the use of detergent);
- 3) Some gas existing in the fluid conduit (resulting in pressure head error);
- 4) Accumulated fluid in the gas conduit (resulting in pressure head error);
- 5) Density difference caused by the time difference between conduits (resulting in pressure head error);

The following ways can be used to decrease the errors:

- 1) Pressure conduit should be as short as possible;
- 2) When measuring fluids or steam, the pressure conduit should be connected up to the process technic conduit, with its rake less than 1/12;
- 3) For the measurement of gas, the pressure conduit should be connected down to the process technic conduit, with its rake not less than 1/12;
- 4) The layout of fluid pressure conduit should avoid an extruded point in the middle part, while the gas pressure conduit avoids the sunken part;
- 5) Both pressure conduit should keep in the same temperature;
- 6) To avoid the friction, the diameter of pressure conduit should be wide enough;
- 7) No gas is found in the pressure conduit filled with fluid;
- 8) When using isolating fluid, the fluids in both pressure conduits should be the same;
- 9) When using detergents, the connection part of detergent should be near to the pressure taps of technic pipe; the conduit way passed through by the detergent should be the same in length and diameter.

Try to avoid detergent passing through the transmitter.

2.4 Electrical Mounting



System wiring mounting

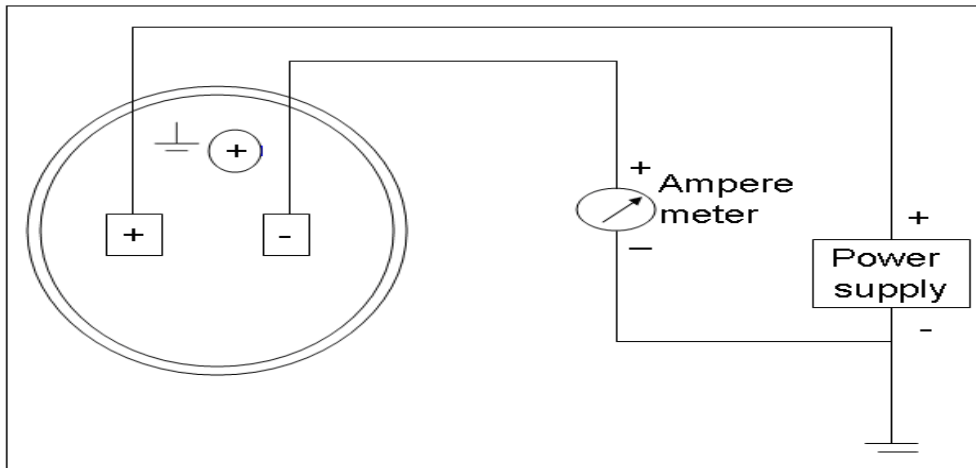


Fig 2-13

(Note 1: user can install the distributor or safe barriers per the onsite and design requirements. For details, see the usage of distributor and safe barrier)

It is recommended to choose the explosion-proof impulse terminal with the cable diameter of \varnothing 8-12. The connection terminal is set with test terminal, convenient for the online test of the operator.

Signal terminal is situated in a separate housing of the electrical box. Screw up the meter cover for wiring. The upper end is for signal, while the lower end is for test meter. Fig.2-13 indicated the terminal location. The test terminal is used for connecting any optional indicator head or test. The power supply goes to the transmitter through the signal line, with no need of additional wiring.

! Special Attention:

Do not connect the power signal line to the test terminal; otherwise the diode inside the test terminal would be destroyed.

In case of the diode being damaged unfortunately, shortcutting the test terminal can keep the transmitter working on, except the indicator unable to connect.

No need to shield the signal wire, and litz wire can be used for better effect. Do not lay together the signal wire and other power wires, to get near to the strong electricity equipment.



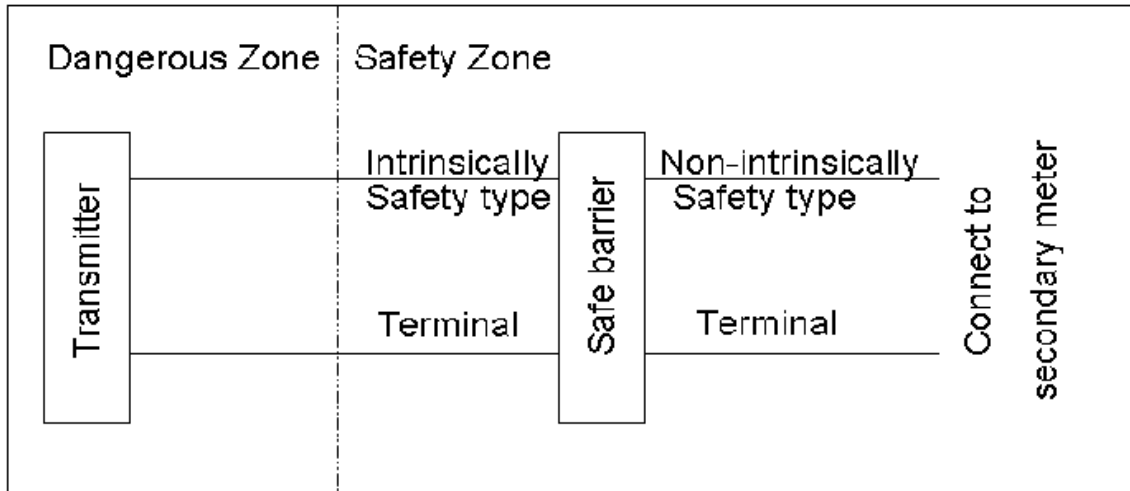
The wiring orifice on the housing body of transmitter should be sealed or inserted in a plug smeared with seal glue to prevent the humidity being accumulated in the housing. In the case of the wiring not being sealed, the transmitter should be mounted with the wiring orifice upside down to discharge the moisture.

The signal line may ignore the grounding (hanging) or get to ground at any point on the loop line. The transmitter housing can have grounding or not, and the power has no need of being stabilized, even if the power ripples has a peak-to-peak value of 1V. And the output ripples of transmitter can also be ignored.

Since the transmitter gets grounding by way of capacitance coupling, it is not appropriate to use a high-voltage mega-ohm meter to check the insulation resistance. The voltage used for checking the line should be no more than 100V

The transmitter circuitry is designed as intrinsic safe circuitry, limiting the output current below 30mA DC (35mA DC under the condition of high temperature or high voltage).

2.5 Intrinsically Safety Type Explosion-proof Transmitter system wiring Drawing



Ui: 28vDC	um≥250V AC/DC
Li: 30mA	uo≤28vDC
Pi: 0.84W	lo≤30mA

Note:

See GB3836, 4-2000 standard for the definition n of UM, UO, lo, po, Ui
Li, pi.



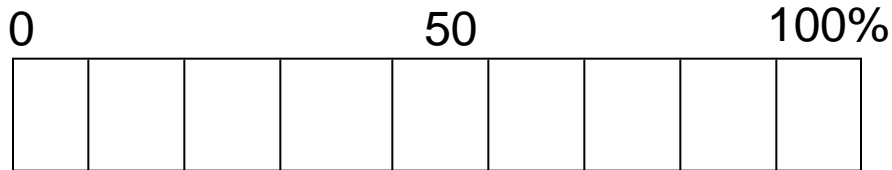
The connection wire or cable between safe barrier and transmitter has a largest allowed distribution capacitance of no more than 0.02 μ F, and the largest allowed distribution inductance of not more than 2.0mH.

3. Debugging and operation

3.1 Summary

Instruction to Display:

- PV----- Transmitter in measurement state
- SV----- Transmitter in setting state
- Er----- Excessive pressure or sensor circuit fault
- mA----- signifies LCD display of output current value
- %----- signifies LCD display of percentage of measurement pressure corresponding to setting range
- °C----- signifies the average value of measurement agent and environment Temperature
- √----- signifies the output current of transmitter in square root state
- KPa----- signifies LCD display of pressure unit
- Mpa----- signifies LCD display of pressure unit



Signifies the analogue indication of pressure measurement corresponding to setting range

S-PORT---- special communication port

3.1.2 Description of keys functions

- ESC** : cancel the current operation and return to the previous operation
- MOVE** : move cursor and decimal point in typing data
- ENTER** : enter a menu and confirm an operation
- DOWN** : As paging down a menu and inputting data, cursor position digital less 1
- UP** : As paging up a menu and inputting data, cursor position digital plus 1



3.1.3 Working state display

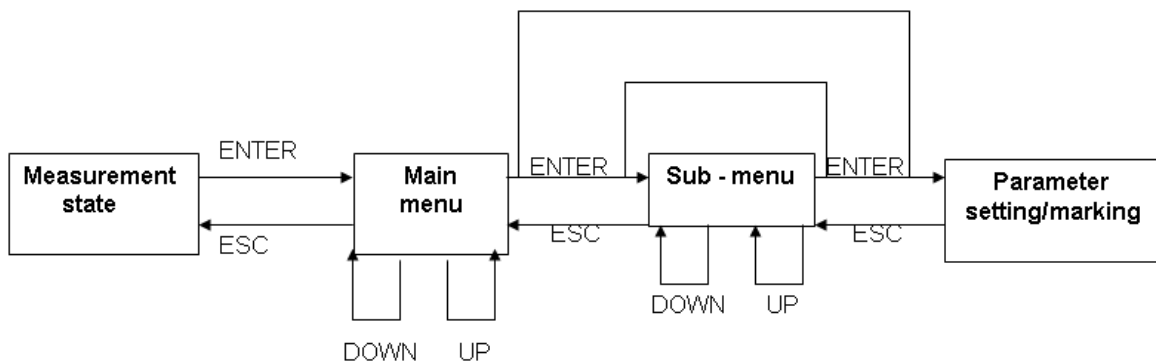
PV Display: in measurement state

SV Display: in setting state

Er Display: signal circuit failure or pressure exceeded

3.1.4 Menu Description

Menu is constructed in levels, and the maximum is 4 levels, as following:



Rolling and selection of menu:

Press the key UP, roll to display the items in ascending order

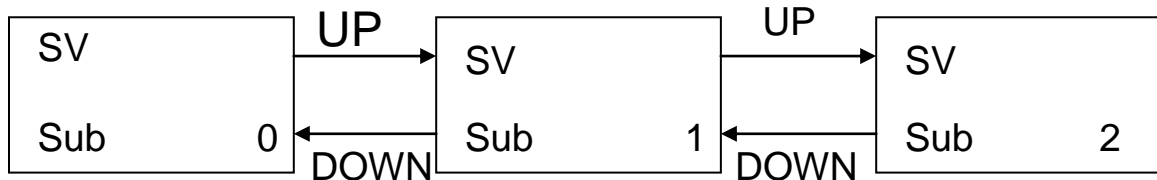
Press the key DOWN, roll to display the items in descending order

Press the key ENTER, enter the corresponding sub-menu or specific function operations

Press the key ESC, return to the previous menu

As indicate below





3.1.5 Input symbols

Use UP or DOWN to change the highest digital (the left-most one of the 6-digit LED), and its loop order is 0.....9,-0.....; the common digitals have the loop order as: 0.....9,-0.....

3.1.6 Input Integer

When an integer is input, the screen displays XXXXXX, and the lowest digital flashes to indicate the cursor position.

Press the key UP to increase 1 number of the cursor location

Press the key DOWN to decrease 1 number of the cursor location

When a negative number is input, the negative symbol is input at the location of the highest digital

Press the key MOVE to move 1 digit to the left in cursor loop

Press the key ESC to return without saving

Press the key ENTER to save and return

3.1.7 Input signal

When a decimal is input, the screen displays XXXXXX (depending on the decimal digital), and the decimal digital flashes to indicate the cursor position.

Press the key UP once and release to increase 1 number of the cursor location

Press the key DOWN once and release to decrease 1 number of the cursor location

When a negative number is input, the negative symbol is input at the location of the highest digital

Press the key MOVE to loop the cursor by 1 digital to the left, and decimal will follow the move

Press the key ESC to return without a save

Press the key ENTER to save and return

Use UP and DOWN to change the highest decimal number and input the negative symbol

3.2 Accuracy Micro-tuning of Transmitter



(Instruction: since the different of the standard and gravity acceleration may result in accuracy error of transmitter. User can do the output micro tuning through this operation to enhance its accuracy.)

- 1) **Reset:** press down the keys UP and DOWN at the same time for about 5 sec will reset the transmitter, and the program restarts.
- 2) **Enter menu:** press down ENTER for about 5 sec to enter main menu for the corresponding operations.
- 3) **Calibration operation:**

I. Instruction

A transmitter has 3 values of calibration: zero point, transfer zero point and range point.

Zero point: different value is zero, e.g. H and L rooms have the same pressure, defined as the physical zero points.

Transfer zero point: 4mA pressure point (the possible physical zero point), defined as logic zero point.

Range point: 4mA pressure point (the possible physical zero point).

II. Operation

- a) Under the condition of no standard pressure, only the physical zero point can be calibrated.

Method: press down the housing body button for zero alignment or the key DOWN for about 5 sec then “GOOD” will display after releasing it, prompting the completion of physical zero calibration, “0” will display after calibration.

- b) Under the condition of standard pressure source, it is available for the calibration of transfer range point and zero point. But these operations cannot be done usually. A password is a must to acquire the authority before doing these operations.

❖ When the authority is acquired and the transfer zero point is not “0”, the transfer zero point can be calibrated.

Method: after the pressure is added up to the stabilized pressure value of transfer zero point, press down the key DOWN and the key MOVE for about 5 sec for a short moment display of “00”, the calibration of transfer zero point will be completed.

❖ When the authority is acquired and only the range point is not “0”, the range point can be calibrated.

Method: after the pressure is added up to the stabilized pressure value of range point, press down the key UP for about 5 sec, then “GOOD” will display for seconds after releasing it, prompting the completion range point calibration.

3.3 Instruction of Main Menu



Usually, the main menu has 7 items for rolling display, respectively as follows:

Sub 0: display setting (unit setting)

Sub 1: zero transfer

Sub 2: range setting

Sub 3: pressure port H, L terminals switching

Sub 4: setting communications address

Sub 5: damping setting

Sub 6: password verifying and setting (after verification is successful)

After the password is input and verified, the menus will change to a rolling display of 14 items. A restart will go back to the 7-item menu.

The first 6 items in the 14-item menus are the same to the above mentioned, and the rest items are respectively as follows:

Sub 7: current parameters setting (R0, R100)

Sub 8: P100 setting (maximum rating range)

Sub 9: display or input differential pressure marking point

Sub 10: mark differential pressure in room temperature

Sub 11: reverse mark differential pressure in room temperature

Sub 12: display or input temperature point

Sub 13: display or input temperature compensation point

In the state of main menu, no key operation for 2 min will return to the measurement state.

3.4 Detailed Instruction of sub-menu Operation

I. Sub 0 display unit setting

After entering sub 0 menu, the display will be the current measurement value and the corresponding unit; when the current is output in square root, it will display “√” unit optional menu, 6 items in rolling display are as follows in sequence:

0 kPa

1 MPa

2 mA

3 %

4 √mA

5 °C

Press the key UP and the above items will roll to display in ascending order.



Press the key DOWN and the above items will roll to display in ascending order.

Press the key ENTER will complete selection, and save into memorizer, then return to main menu.

Press the key ESC will cancel the operation and the unit remains unchanged, then return to main menu.

In the state of this menu with no key action for 2 min, the menu will return to the measurement state with unit remaining unchanged.

Note: output way of current dependent only on item 2 and 4, and the other options will not change the original current output way. No square root function is configured with the digital-intelligent direct-coupled pressure/fluid level transmitter.

II. Sub 1 zero transfer

Upon entering sub 1 menus the display will prompt the input of a floating-point number. The display is the original setting. Input the zero transfer point (unit kPa), press ENTER and then return to main menu after this operation. The setting of zero point transfer will have no impact on the range, but the setting is not allowed to exceed the maximum rating range.

III. Sub 2 Range setting

Same to the operation of sub 1 menu, sub 2 is only used for setting the full-range, which is allowed to exceed the maximum rating range as well.

IV. Sub 3 switching Between High-pressure Terminal and Low pressure Terminal

Notes: this function is not available for 3351DPT series Digital-intelligent direct-coupled pressure/fluid level transmitter.

Usually, differential pressure transmitter is defined with the H-L set upon leaving the factory, and the user is not permitted to change it.

After entering this menu, it will display the current setting status and a change is not permitted. To reset it, input the password in sub 6 first to get the calibration authority, and then use UP and DOWN to set the options, and ENTER to confirm. ESC will keep the original setting and return.



V. Sub 4 setting of communications address

As more than one instrument are connected and communicate with the upper computer, each instrument must have different address. Otherwise, a response confliction may occur, failing to finish communications task. Upon entering this menu, an integral will display the original address point. Input the new address and press ENTER to finish the setting, and return to the main menu. Press ESC will keep the original setting and return to main menu

VI. Sub 5 Damping setting

Same to the operation of sub4, sub5 is only used for setting damping value (0-32 sec or more).

VII. Sub 6 password Management

Upon entering sub 6 menu, the input an integral, the password, at the screen prompt, the program will verify whether or not the password is correct. If the input password is wrong, it will display “ERROR”, press ENTER will return to main menu. If the input password is the access password or user password, the menu system will be extended into 14-item menu, allowing more operations. Meanwhile, at this moment sub 6 will reset the user’s password.

If a special password is input, and the corresponding function can be finished as described below:

040820: cancel transfer zero alignment and obtain calibration authority.

040821: cancel range calibration and obtain calibration authority.

050728: clear physical calibration

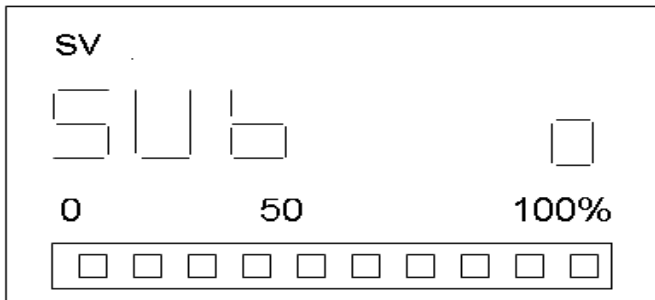
Note: The operations in sub 7 through sub 13 are relating to the core parameters, and forbidden to use without the authority. This manual has no instruction on these operations.

Examples for the operations:

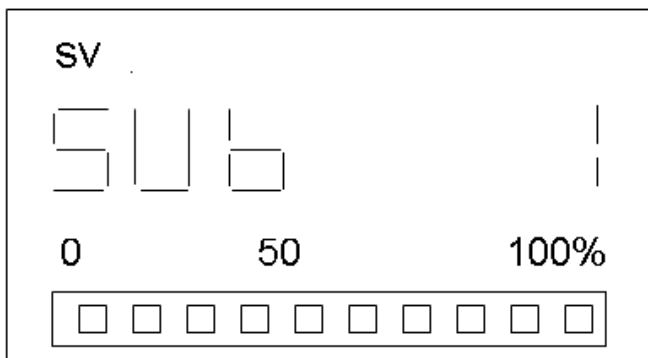
1) Zero pint set as -5kpa (negative input)

Pressure down the key ENTER for about 5sec, and release it to enter main menu. The display is as follows:

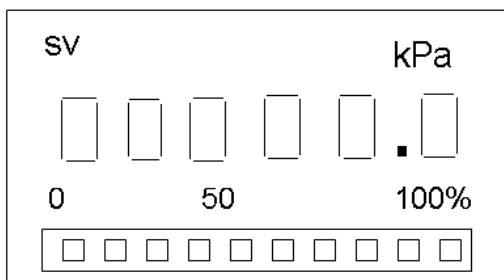




Press UP to roll the menu and repeat it once, the display is as follows:



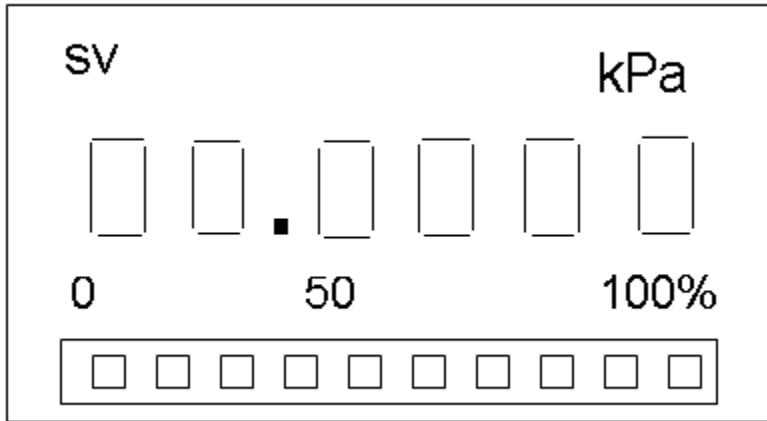
Press ENTER to enter sub-menu and the display is as follow



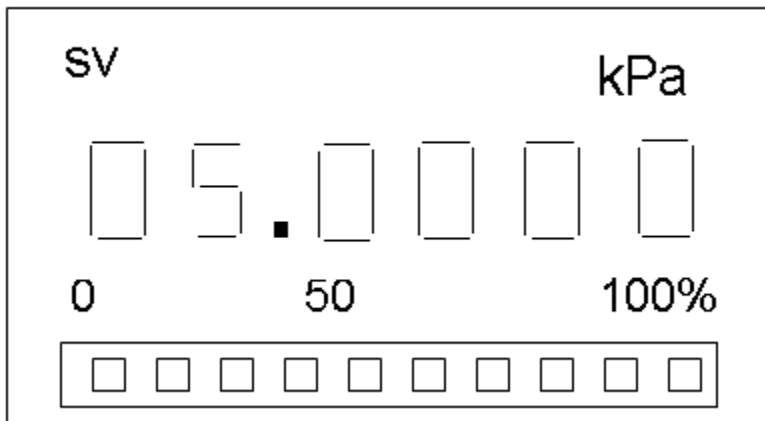
The current value is zero
The cursor flashes before the decimal point.

Press the key MOVE to move the cursor end decimal point and repeat it for 3 times, the display is as follows:

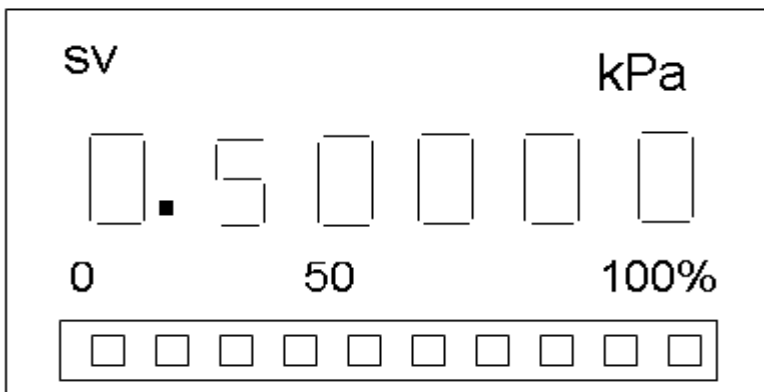




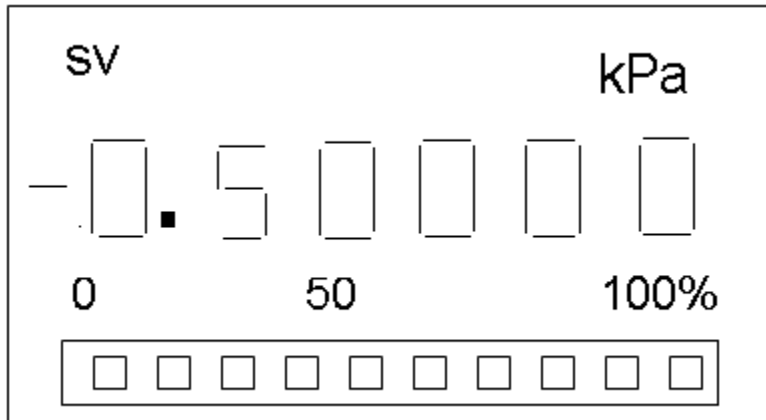
Press the key UP to regulate number and repeat it for 5 times, the display is as follows:



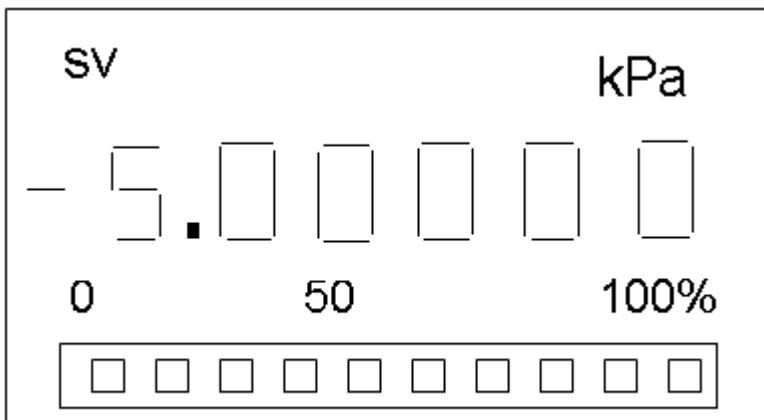
Press the key MOVE to move the cursor and decimal point and repeat it for once, the display is as follows:



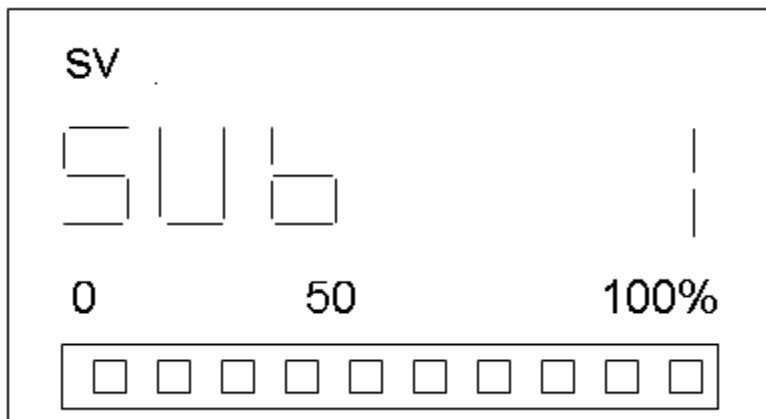
Press the key DOWN to input the negative symbol and repeat it for once, the display is as follows:



Press the key MOVE to move the cursor and decimal point and repeat it for 5 times, the display is as follows:



Press ENTER to save the setting and return to main menu

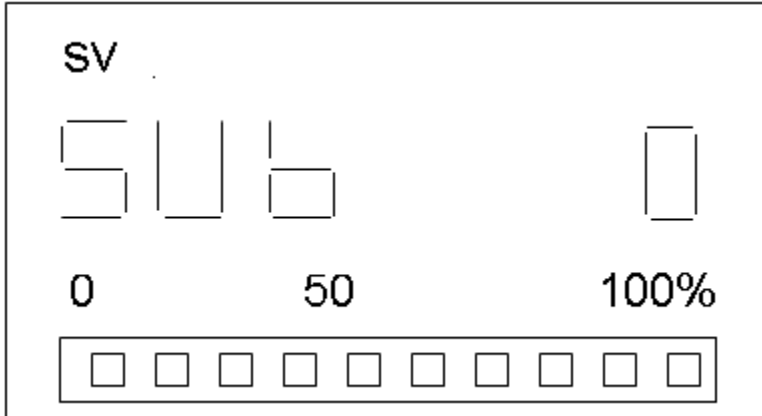


Press ESC to return to measurement state.

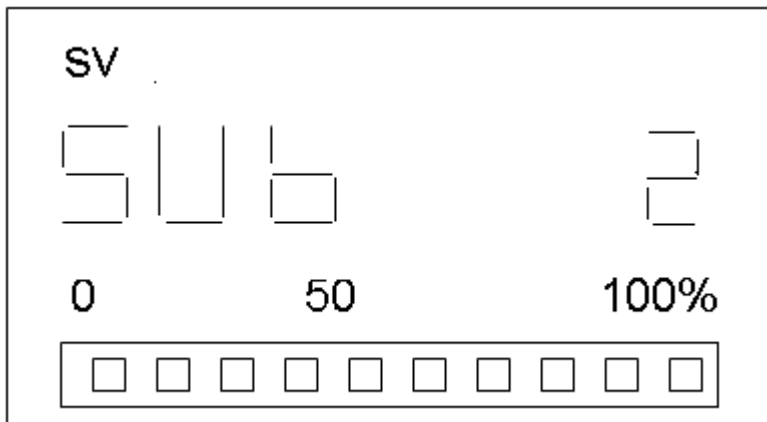


2) Range set as 7.2 kpa (decimal input)

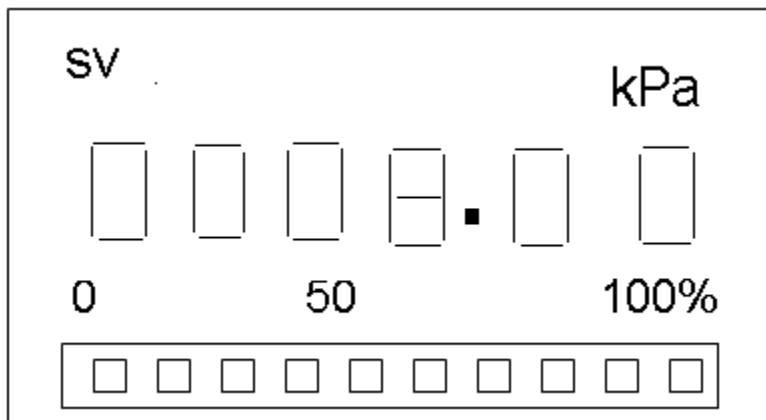
Press down ENTER for about 5 Sec and release it to enter main menu, the display is as follows:



Press UP to roll the menu and repeat it for twice, the display is as follows:

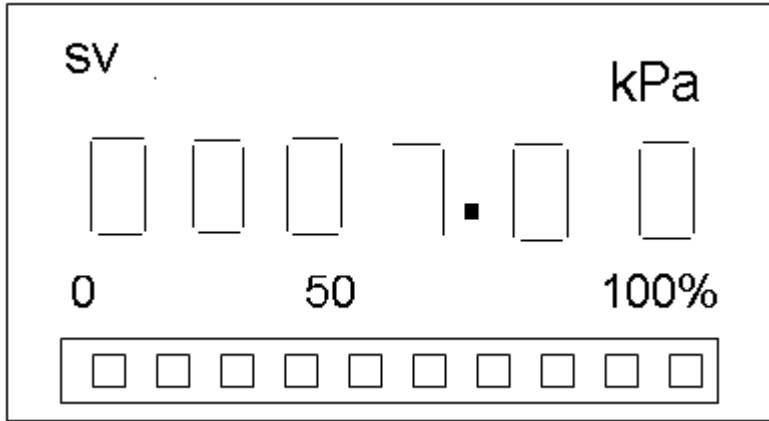


Press ENTER to enter Sub 2 Sub-menu and the display is as follows:

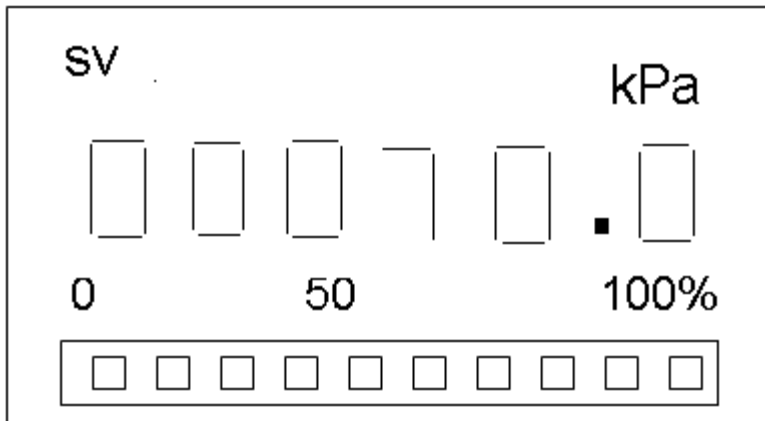


Display the previous value (8kpa), the cursor flashes at the units, digit Press DOWN once less the cursor digits, the display is as follows:

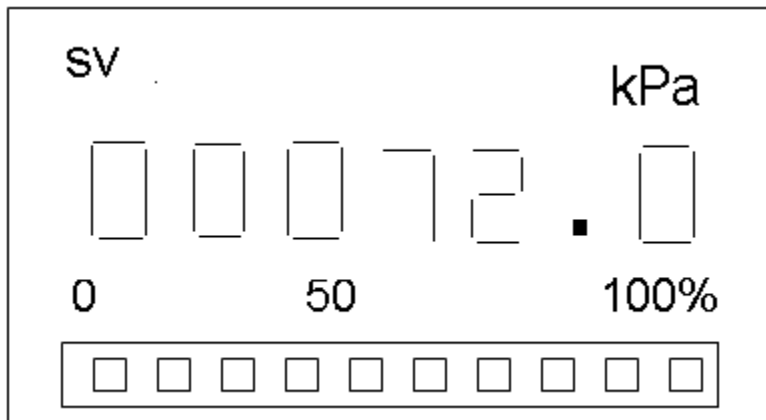




Press MOVE to move the cursor to the 2nd digit in the right as follows:

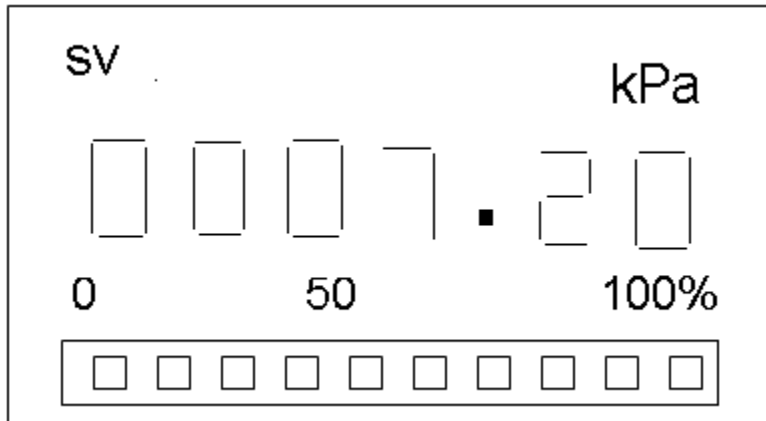


Press UP to increase the cursor digits for a consecutive 2 times in the following display:

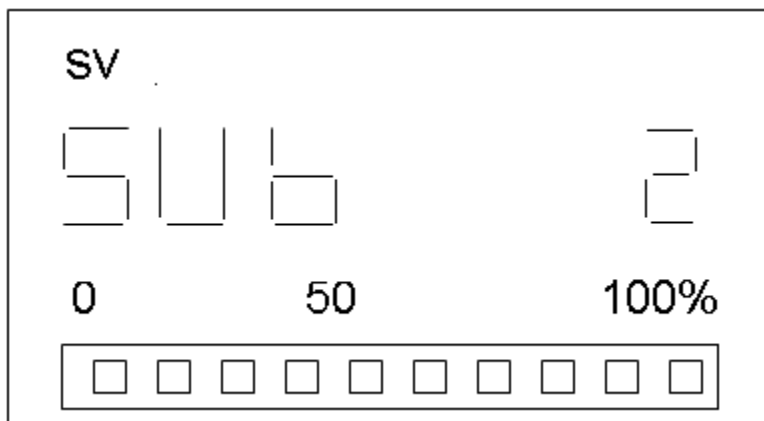


Press MOVE to move the cursor to the 3rd digit in the right as follows:





Press ENTER to save the setting and return to main-menu



Press ESC to enter the state of Measurement.

4. User's Maintenance

4.1 Summary

Our digital-intelligent pressure/differential pressure transmitter is smart and fixed, with zero stability capacity (ZSC) and Temperature supplementing capacity (TSC) plus seldom-regular maintenance. Functionally, a digital transmitter is largely comprised of 3 parts including sensor modules, master circuit board and meter head. Where: master circuit board is fastened with sensor modules with bolts, and coagulated with sol as a whole. This integrated design structure can stabilize the distributed capacitance and parasitic capacitance between them. Meanwhile, the decreasing of signal collecting circuit and signal source distance reduces the disturbance. This compact structure also provide a more solid and reliable transmitter with few problems occurred.

4.2 Soft Maintenance



The digital transmitter is an intelligentized product with its parameters open to the users, who may adjust as per the actual situation the zero point, and set range and damping, even re-mark it. Likewise, this could cause the confused parameter setting or core parameter being modified resulting in a soft fault. In the case of core parameters (marked value upon leaving factory) being changed, it is necessary to re-mark it as per the operational instruction or reset the parameters through the way of communications, so as to make it work normally.

In the actual need of zero point re-calibration, press down the button for zero alignment on the side of the transmitter for about 5 sec to realize the manual operation. In need of the setting of other parameters, just screw up the meter head cover, and finish the operation with the keystrokes or communications.

4.3 Hard Maintenance

Generally, sensor modules, circuit board and meter head are not in the range of on-site repair. The hard fault maintenance item is only limited to circuit connection check, transmitter cleaning, changing meter head and wiring terminals check.

Testing Terminals

The testing terminals are connected with the both terminals of a diode, with the loop signal power passing through inside. When the indicator head or testing equipment is connected with the testing terminals, the diode is shortcut. Except the voltage between both terminals less than the value voltage of the diode, no current would pass through the diode. In testing or connection the indicator head, to ensure no current passing through diode, the testing equipment or meter head should not have a resistance of no more than 10Ω (for 4-20mA DC model). The resistance value over the above value by 3 times would generate an error of less than 1%. There are conductive copper components on the lower left side of “+”, and the lower right side of “-”, which can be used, in the electrified state of transmitter, to test the output current with a digital multi-meter.

Meter Head check

Screw up the meter head cover, release two M3 bolts with Philips screwdriver and take out the meter head; plug out the parallel wires and the power supply to dismantle the head. It is also the time to check to see if there is either any dirt or any problems with the line connection board. For any of the problems, deal with it in time. Reassembly of the meter head should be done in the reverse order of dismantling.

Check main body of process sensor (capacitance sensor) pay attending to the following respects:

1. before the disassembly of the sensor main body, it is required to dismantle the transmitter from the working point.



2. After reassembly, it is required to undertake the cycling of the temperature and pressure to ensure its precision. This is included in the reassembly steps of process sensor main body.
3. Dismantle the 4 major bolts to dismantle the pressure room.
4. Use the soft cloth or mild detergent to clean the isolating diaphragm, and then wash it with water .
5. Pressure room can be rotated or assembled in reverse for convenience.

Check wiring terminal

Screw up the rear cover, the wiring terminals can be seen. Release the 2 locating bolts to take down the wiring terminal cover, and the wiring circuit board is visible. Check to see if the board is visible. Check to see if the board is connected correctly and reliably, pay a special attention to the assembly of feed through capacitors and testing diode.

4.4 Troubleshooting

Symptom: over output

Potential reasons and troubleshooting methods:

Primary elements: check the range of the primary elements

Pressure conduit:

Check the state of leakage and jam

If the cut-off valve is in full-open state

Check the gas in the fluid conduit and fluid in the gas conduit.

If the fluid proportion of conduit is changed.

Check the dregs in the pressure room.

Electrical connection of transmitter: confirm if the plug seat of parallel wires is clean.

Test Electrical part: Check if the test display pressure value has a bigger deviation with the actual pressure value .if yes, it is required to re-mark it or send back to factory for a proper treatment.

Circuit check: if the display pressure value is consistent with the current. If not. The current is needed to re-regulate.

Sensor module: see this section “check main body of process sensor”

Power supply: check the out put of power supply

Symptom: unstable output

Potential reasons and troubleshooting methods:



Parameter check: if the zero transfer and range setting are correct.

Loop wiring: if the transmitter voltage is nominal. Check the intermittent shortcut. Open circuit and multiple grounding points.

Tested agent pulse: regulate the damping value.

Pressure conduit: check the gas in the fluid conduit and the fluid in the gas conduit.

Electrical part test: check to see if the pressure value is stable through meter head, and then confirm if the instability is caused by sensor and circuit board. If yes, change the sensor and circuit board.

Symptom: under-output or no output

Potential reasons and troubleshooting methods:

Parameter check: if zero transfer and range setting are correct

Primary elements: check elements assembly and working conditions. Any change of tested agent characteristic would affect input state.

Loop wiring: if the transmitter voltage is a normal state.
Check shortcut and multiple grounding points.
If the polarity is right connected
Check the loop impedance.

Pressure conduit: if the pressure connection is correct.
Check the state of leakage or jams.
Check the gas in the fluid conduit
Check the dregs in the pressure room.
If the cut-of valve is full open and the balance valve is closed
Check to see if the fluid density is changed in the pressure conduit.

Electrical connection: if the sensor module wiring has a shortcut.
Confirm if the parallel wires plug seat is clean.
Check the wiring state of sensor module s.
Check if the 8feet of the plug seat is correctly
Connected to the housing.

Diode fault test: change the diode or shortcut the testing terminals.

Electrical fault of transmitter: use a stand by board to test if the circuit has a fault and change the faulted board.

Sensor modules: see this section: check main body of process sensor”.

5. Instructions for Mounting and use of Flange-Type Transmitter

5.1 Summary

Capacitance flange differential pressure/pressure transmitter is linked in a flange way with the tested part used for the following occasions:



1. It required isolate the high temperature agent from the transmitter;
2. The tested agent is corrosive to the sensitive elements of transmitter:
3. The tested agent is floating fluid or of high viscosity:
4. The tested agent is liable to solidified or crystallized due to the change of environment or process temperature;
5. The change of the tested agent needs to purify the testing head:
6. The testing head must keep clean.

Capacitance flange differential pressure/pressure transmitter is mainly used for continuously and precisely measure the fluid, gases and steams regarding to their different pressure and the fluid level, interface and density, etc. working with the throttling device, it is capable of continuously measure the flow of gases, fluids and steams . And the tested signal can be converted into 4-20mA DC 2-wire system signals, which can be matched with other unit instruments or industrial control computers as the input signal of indication, recording and regulator to form the industrial automatic system for testing, recording and control.

5.2 Specifications:

5.2.1 flange- Type (single-flat, single-in-line) fluid level transmitter

5.2.1.1 Measurement range

0-1.2kPa-2.5Mpa (0-120mm H₂O -250000mmH₂O)

5.2.1.2 Working pressure (static pressure)

0.1-4Mpa

5.2.1.3model

No	Name	Model	Range	Rating Working Pressure(MPa)
1	Single – flat flange differential pressure transmitter	3351DPTCC-3312	0-1.2-7.2KPa	2.5
2		3351DPTCC-4412	0-6-40KPa	4
3		3351DPTCC-4512	0-30-180KPa	4
4		3351DPTCC-4612	0-0.16-1MPa	4
5		3351DPTCC-4712	0-0.4-2.5MPa	4
6	Single-in-line flange Differential pressure Transmitter	3351DPTCC-3332	0-1.2-7.2KPa	2.5
7		3351DPTCC-4432	0-6-40KPa	4
8		3351DPTCC-4532	0-30-180KPa	4
9		3351DPTCC-4632	0-0.16-1MPa	4



10		3351DPTCC-4732	0-0.4-2.5MPa	4
----	--	----------------	--------------	---

5.2.1.4 Flange fluid level transmitter (e.g. flat flange and inline flange)

Flange standard: (HG20592-20635-97) GB/T82.1-94 and (JB/T82.2-94)

See Fig: 5-1 and Tab: 5-2: for the specific assembly size;

Tab5-2PN4.0 Flange size

DN	d1	D		D1	D2	b	Screw hole			In-line flange inserted depth	Flange theoretic weight
		JB	GB				Dia meter	Quantity	Bolt		
80	78	195	200	160	120	24	18	8	M16	50 100 150	5.02Kg
100	96	230	235	190	149	26	22	8	M20	50 100 150	7.63Kg

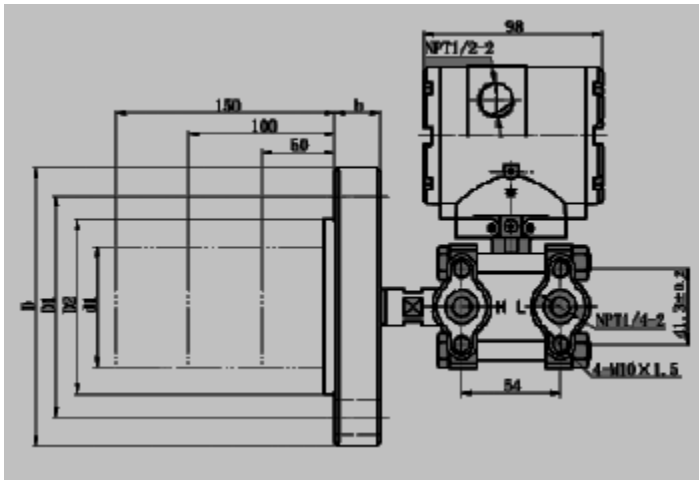


Fig 5:1

5.2.1.5 Mounting position

Flange fluid transmitter is directly mounted onto the box body or pot wall in flange form. As the pressure diaphragm is in the vertical position, the possible zero change occurred is the maximum 28mmH₂O. As the diaphragm is in horizontal position, the zero point change is less than 100 mmH₂O (an additional length variation is needed for the inline flange) with no influence on the range through. This error can be eliminating through calibration.

5.2.2 Remote flange differential pressure/pressure transmitter

5.2.2.1 Range of measurement:

Differential pressure: 0-1.2kPa-2.5Mpa (0-120mmh₂O-250000mmh₂O)

Pressure: 0-6kPa-10Mpa (0-600mmH₂O-1000000mmH₂O)

5.2.2.2 Working pressure (static pressure)

0.1-4Mpa

5.2.2.3 Model



See table 5-2 for the models of the remote flange differential transmitter

NO	Name	Model	Range	Rating working pressure (MPa)
1	Double-flat flange differential pressure transmitter	3351DPTCC-4422	0-6-40KPa	4
2		3351DPTCC-4522	0-30-180KPa	4
3		3351DPTCC-4622	0-0,16-1MPa	4
4		3351DPTCC-4722	0-0,4-2.5MPa	4
5	Double-in-line flange differential pressure transmitter	3351DPTCC-4442	0-6-40KPa	4
6		3351DPTCC-4542	0-30-180KPa	4
7		3351DPTCC-4642	0-0,16-1MPa	4
8		3351DPTCC-4742	0-0,4-2.5MPa	4

Note: single plate and single-in-line types are not listed in the table
 PN100-DN65 (Only used for 3351DPTYC-1812, 1832)
 Remote capillary length: 1.5m -13m

5.2.2.4 Mounting size

All remote flange transmitters have the flanges. See fig 5-2 and tab 5-4 for PU mounting sizes.



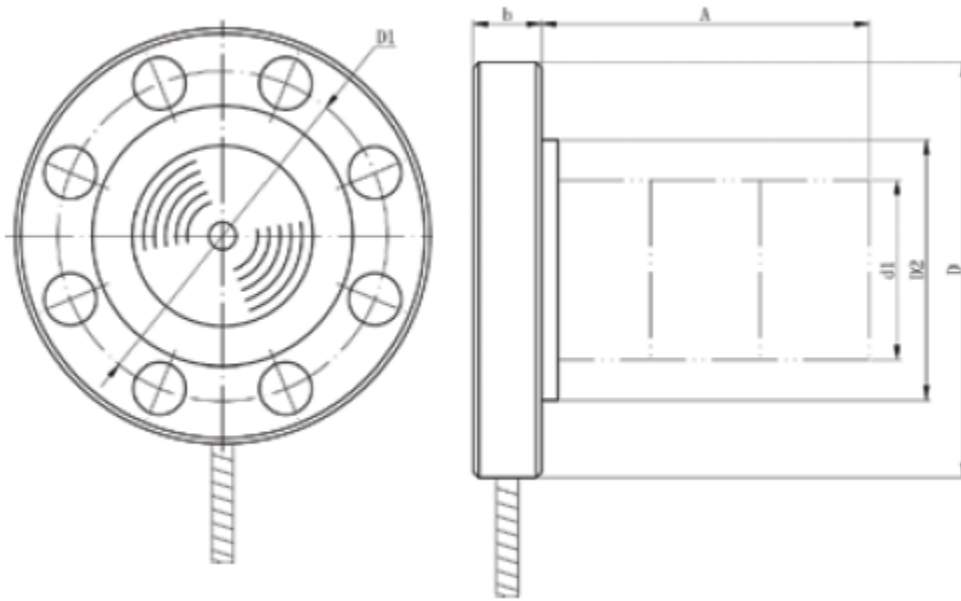


Fig 5.2

PN	DN	d1	D	D1	D2	b	Screw hole			Inserting depth
							Diameter	Quantity	Bolt	
4.0	80	78	200	160	120	24	18	8	M16	50 100 150
4.0	100	96	235	190	149	26	22	8	M20	50 100 150
10.0	65	62	220	170	138	32	26	8	M24	50 100 150

5.2.2.5 Mounting position

In mounting the remote flange transmitter, there are some limitations in the height different between the pressure transmitter and the flange, and the height difference between two flanges of differential pressure transmitter. See tab.5-2 for details.

Range No	Allowed Deviation of Height (M)	
	Silicone oil	Fluorine oil
4	3.84	1.89
5	19.2	9.48
6.7.8	Not applicable for this limitation	

As the pressure transmitter and flange or the 2 flanges of differential pressure transmitter are not at the same height, zero point changes may occur resulting from the fluid bar action inside the remote capillary. So zero point calibration should be done again after mounting.



5.2.2.6 Changes in the tested agent temperature and environment will result in the zero point excursion of transmitter, which can be diminished by the use of the following mounting method:

1. Avoid the sunshine directly reflecting on the transmitter and remote devices;
2. Regulate the zero point along with the change of seasons;
3. Maintain a constant temperature of remote capillary.

5.3 Calibration of Instrument

The calibration of flange transmitter is basically same to the general transmitter, except the device needed for the sealed linkage with flange. This consequently determines the tested standard pressure.

5.4 Usage of Instrument

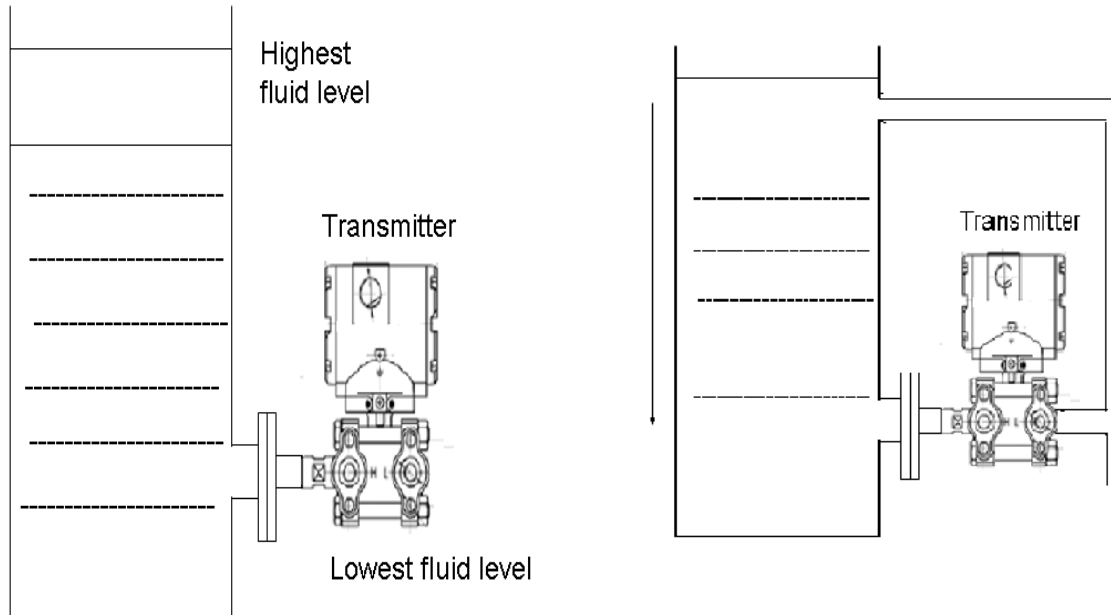
5.4.1 Flange Fluid Level Transmitter

In the use of flange fluid level transmitter, it should be noted that a flat-flange fluid level transmitter is for the general viscid agent; and for the agent with a strong viscosity, it is required to use the in-line flange fluid level transmitter. In mounting, the measurement diaphragm must be deep inside the internal wall of the tower, at least tangent to the inside wall. If the tested agent has a larger flowing speed and a stronger grinding capacity, it is likely to wear the isolation diaphragm. So the corresponding measures need to be adopted before use. Single-flat and single-in-flange fluid level transmitter have the same method of calculation in measurement.

5.4.1.1 Usage without transfer :(see fig.5-3)

The instrument is mounted onto the identical horizontal height of the lowest fluid level. In the measurement of breached containers, the instrument gets its negative pressure diaphragm access to atmosphere. In measuring the sealed containers, the upper part of the container gets access to the diaphragm of the negative side. If the negative pressure can keep dry, it has no need to mount the condensate pot. Otherwise, a condensate pot is needed and the condensate fluid is discharged on a regular basis. In discharge, close the normally open-valve to avoid the transmitter bearing the single-direction pressure.





5.4.1.2 Usage with negative transfer (see fig.4)

If it is not convenient to mount a condensate pot, or for the purpose of isolating the corrosive agent from entering the negative pressure side, the isolation fluid can be used as indicated in fig.4. Under such circumstance, the pressure difference the instrument has:

For instance: for the know $r_1=1.4\text{g/cm}^3, r_2=0.89\text{g/cm}^3$

$H=500\text{mm}, H_o=100\text{mm}, h=1700\text{mm}$

Range: (formula omitted)

Negative transfer amount: (formula omitted)

Before mounting, range is required to regulate to $-1220-880(\text{mmH}_2\text{O})$

5.4.1.3 Usage of Instrument with positive Transfer

In the case of the instrument being mounted below the lowest fluid level, the usage indicated as



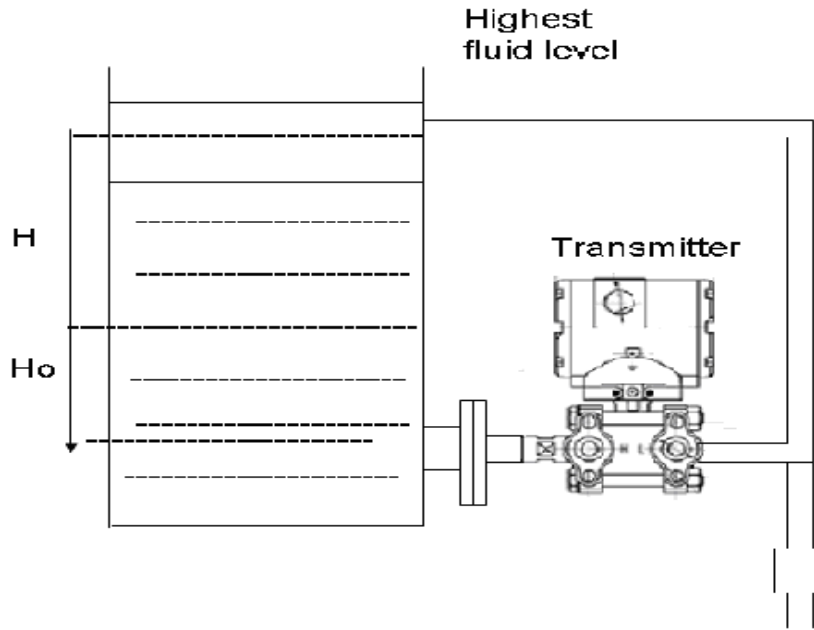


Fig5-5

Fig: 5-5 Use positive transfer to enhance the sensitivity of measurement

Differential pressure: $\Delta P = (H_0 + H) r$

Positive transfer amount: $A = H_0 r$

For instance: tested agent proportion $r = 1.1 \text{ g/cm}^3$, $H = 910 \text{ mm}$, $H_0 = 820 \text{ mm}$

Range: $P = H * r = 910 * 1.1 = 1001 = 1000 \text{ mmH}_2\text{O}$

Before mounting, it is required to regulate the range to 900-1900 mmH₂O

5.4.1.4 Measuring of fluid interface:

If the fluid has a stronger viscosity in the lower part of container, and liable to crystallize, whereas upper fluid doesn't get crystallized and have no sediments, it is recommended to use single-flat flange fluid level transmitter for the measurement of interface.



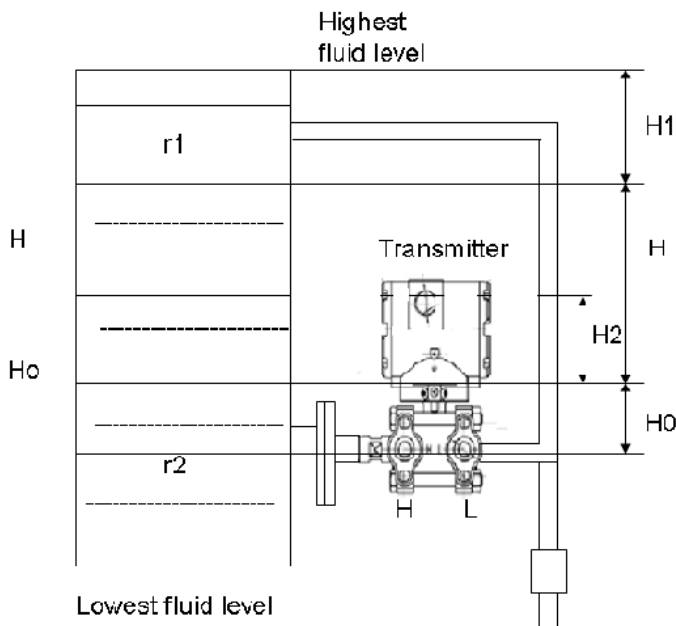


Fig5-6 use single-flat flange fluid level transmitter to measure interface

Pressure to positive side: $P_H = r_1 (H_1 + H - H_2) + r_2 (H_2 + H_0)$

Pressure to negative side: $P_L = r_1 (H_1 + H + H_0)$

Differential pressure: $\Delta P = P_H - P_L + (r_2 - r_1) H_0 + (r_2 - r_1) H_2$

Positive transfer amount: $A = (r_2 - r_1) H_0$

5.4.2.1 Some agents would get crystallized as inducted with a constant temperature pressure conduit. In such a case, it is recommended to use a double-flange differential pressure transmitter to do the measurement. Depending on the crystallized degrees of different agents, the following method can be adopted respectively:

- Double-flat flange transmitter
- One-flat & one-in-line flange transmitter
- Double-in-line flange transmitter, as indicated in fig. 5-8

Due to the height difference between two flanges in mounting, it is required to add transfer amount in regulating. Negative pressure remote flange adds the negative transfer at its upper part with the calculation method as follows:

Range: $P = r$

Negative transfer: $B = r_0 h - r H_0$

Where: r -tested agent proportion r_0 - silicone oil proportion 0.97g/cm^3

5.4.2.2 Fluid Interface Measurement



Pressure to positive side: $P_H = r_1 (H_0 + H_1 + H - H_2) + r_2 (H_2 + h_0)$

Pressure to negative side: $P_L = r_1 H_0 + r_0 (H_1 + H + h_0)$

Differential pressure: $\Delta P = P_H - P_L$

Transfer amount $B = r_1 (H_1 + H) + r_2 h_0 - r_0 (H_1 + H + h_0)$

Range $P = (r_2 - r_1) H$

Where: r_0 –silicone oil proportion H -height of the highest interface.

5.4.2.3 Use Double Flange Differential pressure Transmitter to Measure flow

For the agents unable to induct with pressure conduit, the double-flange differential pressure transmitter can be used to measure the flow, as indicated in fig.5-10. In measuring horizontal conduit, both flange at the same horizontal have no fluid level difference without the transfer being involved. In measuring vertical conduit, it will bear all the time the fluid pressure different of $(r - r_0) H$. so the instrument should have the positive transfer amount of $(r - r_0) H$

5.5 Instrument maintenance

5.5.1 There are fill fluid inside the transmission pressure system of the flange transmitter. either the positive and negative sides cannot be released or dismantled, or they will be failure for the leakage of fill fluid;

5.2.2 After instrument is in operation, the regular check should be done for the basic characteristic, calibrate the zero point with the seasons, and then change the failure sealing elements, etc.

5.5.3 In cleaning the flange, pay attention not to scratch it or the instrument would get failure.

Fault symptom	Cause	Treatment
No output	1.Pressure failing to induct into transmitter	Check if the pressure conduit assembly is correct ,And the valves are in a normal valve;pressure conduit is jammed
	2.incorrect power voltage and load resistance	See instructions for 3351DPTYC and 3351DPTCC Differential pressure transmitter
	3.wrong polarity of power	Rectified
	4.output loop breaks off	Get access
Big error, output as high as 100% or 0%	1.jams in pressure conduit, pressure valve or blow &	All the conduits are smooth, and all valves are in a



	wash valve	normal working state; all conduit connectors should be in a sealed state.
	2.measurement loop incorrect	Check the connection wires between distributor and secondary instrument and transmitter, if the working state is in normal state and remove the troubles.
	3.zero point, and linear RP	Change the damaged elements and recalibrate it.
	4.positive and negative transfer switch	Rectified

5.6 instructions for order

5.6.1 corrosion-proof option:

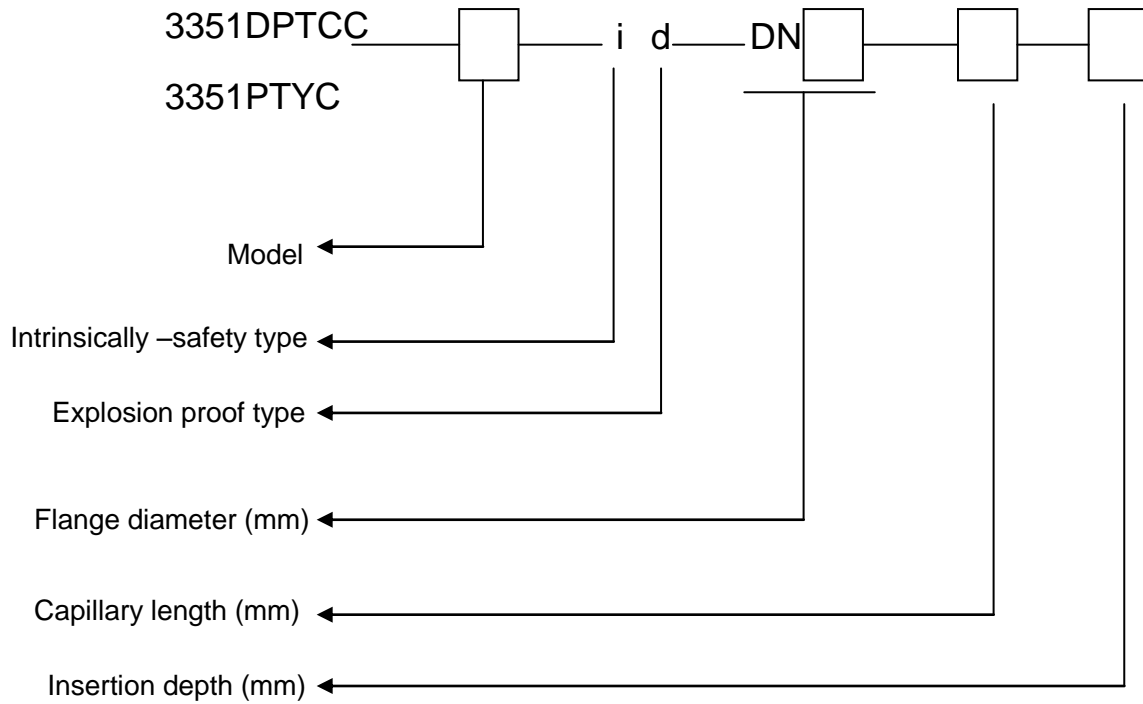
Depending on the different corrosion agents, the isolation diaphragm and pressure transmission diaphragm of the transmitter can be made of the materials such as 316L, Hastelloy C-276, Monel K-500, Hastelloy D-2 and 3YC25: diaphragm board, connector, vent/drain valve and inserting canister as well as other structural materials touching the agents can be made of Mo2Ti(3YC-20)(0Cr17Ni12Mo1Ti)AISI(316L), hastelloy c, Monel, etc. in selection, the models are listed as per the material combination regulated in table 5-6 and the corresponding corrosion-proof footnoted code. See tab.5-6.

Corrosion proof Footnoted code	Structural material			
	Structural pieces touching agent	Pressure transmission diaphragm	Isolating seat	Assembly flange
No footnoted	Mo2Ti(316)	Mo2Ti(316)	Mo2Ti(316)	1Cr18Ni9Ti
F13	316L	Hastelloy c-276	Mo2Ti(316)	1Cr18Ni9Ti
F14	316L	MonelK-500	Mo2Ti(316)	1Cr18Ni9Ti
F15	316L	Tantalum(Ta)	Mo2Ti(316)	1Cr18Ni9Ti
F22	316L	316L	Mo2Ti(316)	1Cr18Ni9Ti
F23	316L	Hastelloyc-276	Mo2Ti(316)	1Cr18Ni9Ti
F25	316L	Tantalum(Ta)	Mo2Ti(316)	1Cr18Ni9Ti
F24	316L	MonelK-500	Mo2Ti(316)	1Cr18Ni9Ti
F33	Hastelloy C	Hastelloyc-276	Mo2Ti(316)	1Cr18Ni9Ti
F26	316L	Hastelloy B-2	Mo2Ti(316)	1Cr18Ni9Ti
F35	Hastelloy C	Tantalum(Ta)	Mo2Ti(316)	1Cr18Ni9Ti
F44	Monel	MonelK-500	Mo2Ti(316)	1Cr18Ni9Ti
F47	Monel	3YC25	Mo2Ti(316)	1Cr18Ni9Ti



Table 5-6

5.6.2 Complete flange transmitter model:



5.6.3 Other requirements:

Flange transmitter is filled with fluorine oil, no need of on-site meter head, etc.

5.6.4 mention unnoted:

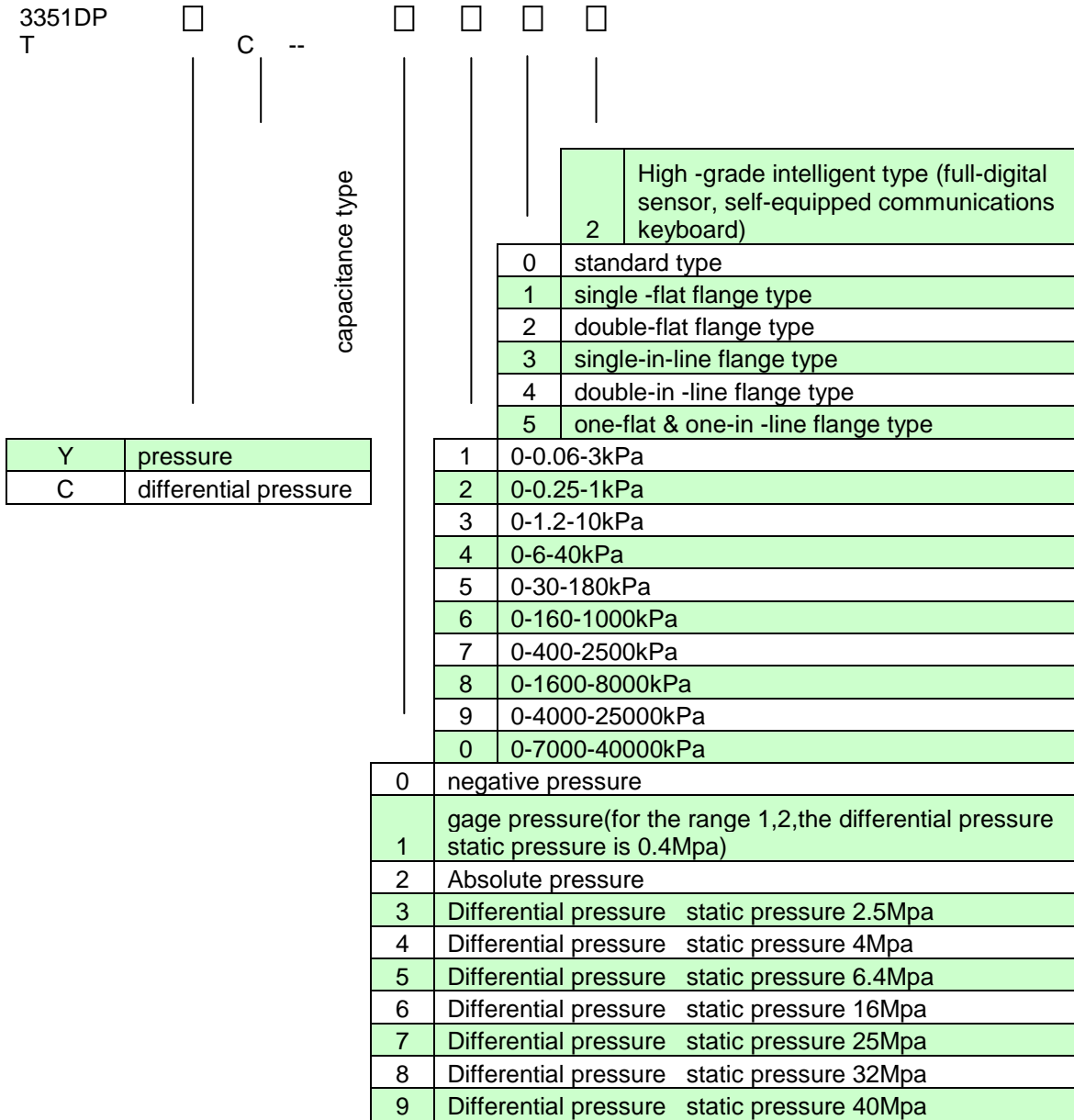
1. for the unnoted flange nominal diameter: provided as DN80;
2. for the unnoted inserting flange depth: provide as 150 mm;
3. For the unnoted remote capillary length: provided as 3.5m.



Appendix

A.1 Model composition

The transmitter produced by our company includes the full series range and special structure, with the model composition as the following diagram:



Note: The users are recommended to use in the above range, and adopt 100:1 in the extreme state. The compressed range adopts the following formula to calculate its precision:

$$0.05 + (0.05 \times \frac{\text{Rating range}}{\text{Setting range-zero point transfer Amount}}) \% \text{ F.S}$$

A.2 Accessories and material code

Code	Meaning			
M3	Digital LCD meter head			
E1	Common cable connector			
E2	Explosion-proof cable connector			
B1	Conduit assembly curve bracket			
B2	Plate assembly curve bracket			
B3	conduit assembly curve bracket			
G1	Onit flange			
G2	Welding pipe connector			
G3	Integral 3- valve group			
I	Intrinsically safety type			
D	Isolating explosion			
H	4-20 m A DC/HART Protocol digital communications			
G	≤200 °C (high temperature silicone oil)			
F	≤ 398 C (high temperature fluorine oil)			
Standard Type	Corrosion – proof material	Structural material		
		Flange connector	Vent/drain valve	Isolating diaphragm
	F12	Carbon steel	316	316L
	F13	Carbon steel	Hastelloy C	Hastelloy C-276
	F14	Carbon steel	Monel	Monel K-500
	F15	Carbon steel	316L	Ta
	F22	316L	316L	316L
	F23	316L	316L	Hastelloy C-276
	F24	316L	316L	Monel K-500
	F25	316L	316L	Ta
	F26	316L	316L	B-2
	F33	Hastelloy C	Hastelloy C	Hastelloy C-276
	F35	Hastelloy C	Hastelloy C	Ta
	F44	Monel	Monel	Monel K-500
F47	Monel	Monel	3YC25	



Note: M3, F22, 4-20mA and DC/RS 485 digital communication are the standardized configuration

The quality inspection department of national explosion-proof products, according to G83836, 1-2000, GB3836 and 4-2000 standards, verifies the explosion-proof types of products in the above table. The explosion-proof types of products in the above table. The explosion-proof sign is Exia IIct5, applicable for zone 0, 1, 2 explosion hazard occasions where contain the explosive gas mixture of t1-T5 temperature groups containing the classified IIA-IIIC.

A.3 Functional Indices

A.3.1 Technical indices of 3351DPT series digital. Intelligent pressure/differential pressure transmitter

Functional specifications

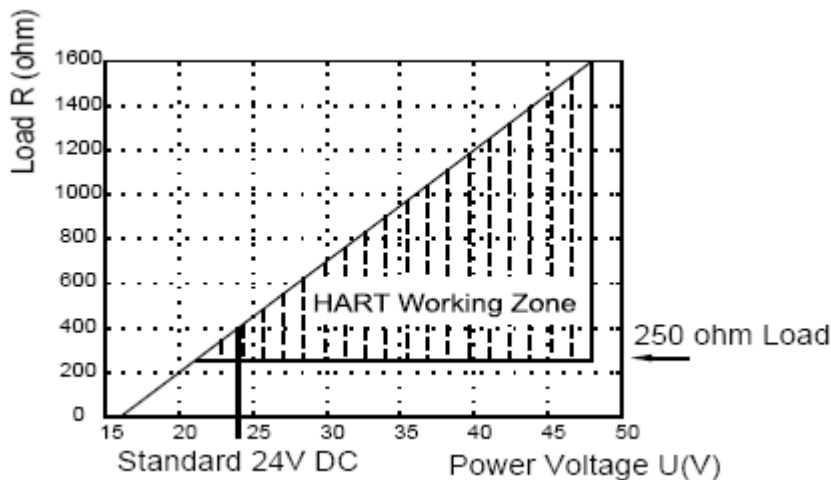
(Reference conditions: no-transfer state, silicone oil fill fluid, 316L isolating diaphragm)

Output signal: 4-20mA DC/RS485 digital communication

4-20mA DC/HART protocol digital communications (optional)

Transmission mode: 2-wire

Load characteristic chart:



Precision:

Linear output: $\pm 0.075\% \pm 0.1\%$ (range ability is 1:1), including the linear, differential and repeated errors)

Square root output: at the output pressure of 4-100%, the value is $\pm(0.2\%$ marked range + the upper limit of 0.05%)

Stability: for DP code 3, 4 and 5, it is $\pm 0.25\%$ of the maximum range, for other codes, $\pm 0.25\%$ of the maximum range.

Humidity: relative humidity 0-100%

Startup time: at the minimum damping, within 2 sec.



Cubage absorbing amount: less than 0.16cm³.

Damping: electrical damping is 0-30 sec.

In addition, the sensor has an extra invariable damping time (0.4 sec for range 3)

Static pressure effect (DP transmitter)

Zero error: as for 14 Mpa, it is $\pm 0.25\%$ in the maximum; for the range code 3, 0.5% of the maximum. It can be calibrated through zero point adjustment.

Range error: it can be calibrated to $\pm 0.25\%$ of the input reading for each 6Mpa; or for range code 3, it is $\pm 0.5\%$. This error can be eliminated before amounting.

Static pressure effect (HP transmitter)

Zero error: as for 32Mpa, it is $\pm 1.0\%$ in the maximum; it can be calibrated through zero point adjustment.

Temperature effect

Zero point error at the maximum range:

For each 56°C, it is $\pm 0.5\%$ of the range. The overall effect includes range error and zero point error: for each 56°C, it is $\pm 1.0\%$ of the range.

For range No.3, the effect is doubled.

Zero point error at the minimum range:

For each 56°C, it is 3.0% of the range. The overall effect includes range error and zero point error: for each 56°C, it is 3.5% of the range.

For range No.3, the effect is doubled.

Vibration effect: at a frequency of 0-200 Hz, each g on any directions is the upper limit value of $\pm 0.5\%$

Power effect: less than 0.005%/V of marked range

Mounting position effect: zero point excursions not more than (0.25kPa),

This error can be eliminated with no influence on the range.

Electromagnetic disturbance/radioactive frequency effect: test is done according to SAMA PMC33.1 in the range of 20 1000 MHz, the magnetic strength can be high as 30V/m.

Structural specifications:

Note: for the adaptability of material, see A.2 Accessories and material mode.

Materials touching agents:

Isolation diaphragm: 316L stainless steel, hastelloy C-276, Monel alloy or tantalum (optional)

Vent/drain valve: 316 stainless steel, Hastelloy C-276, Monel alloy or tantalum

Technic flange and connector: 316 stainless steel, Hastelloy C-276, Monel alloy or tantalum

O-ring touching agents: fluorine rubber, Buna-N rubber (optional)

- Fill fluid : silicone oil
- Bolt: carbon steel plated with cadium
- O-ring sealing : Buna -N rubber(optional)
- Painting: polyurethane

Technic connector: for the transmitter with range No.3, 4 and 5, the center connector holes distance between two flanges is 54 mm, with the upper hole part of NPT1/4-18; for the transmitters with range NO. 6and 7, they 56mm and NPT1/4-18; for range No.8 they are 57.2mm and NPT1/4-18.



For the transmitters with range No.3, 4 and 5, pressur-introducing hole of the 2 connectors is NPT1/4-14; the flange connector can be turn over to have the center distance of respective 50.8mm, 54mm or 57.2mm.

Electrical connector: with the terminals for on-site test

Weight: excluding optional pieces, AP, DP, GP and HP weighs respectively 2.4 kg.

A.3.2 Usage conditions:

Power supply:

16V- 48V DC intrinsically safety type explosion-proof products are required to get a power supply from the corresponding safe barrier (standard 24 VDC)

Using Environment of product

Using temperature:-20°C - +80°C

Storage:-40°C- +104°C

Humidity: 0-90%

Using environment conditions for explosion-proof product:

Humidity:-20°C- +40°C

Relative humidity: 5%-95%

Atmosphere pressure: 86—106kPa

Parameters for intrinsically safety type outsourcing safe barrier:

$U_0 \leq 28V$ DC,

$I_0 \leq 30mA$,

$P_0 \leq 0.84W$

A.3.3 Functional indices for 3351DPT series digital. Intelligent direct coupled pressure/fluid level transmitter

	Code	Minimum measurement Range	Maximum measurement Range	Precision rating
3351DPT 2001	01	0-3 kPa	0-10 kPa	±0.1%
	02	0-10 kPa	0-35 kPa	±0.1%
	03	0-35 kPa	0-100 kPa	±0.1%
	04	0-100 kPa	0-200 kPa	±0.1%
	05	0-200 kPa	0-700 kPa	±0.1%
	06	0-700kPa	0-1.7 MPa	±0.1%
	07	0-1.7 MPa	0-3.5 MPa	±0.1%
	08	0-3.5 MPa	0-7.0 MPa	±0.1%
	09	0-7.0 MPa	0-35 MPa	±0.1%
	10	0-35MPa	0-60 MPa	±0.1%
3351DPT 2318	02	0-1m	0-3.5m	±0.1%
	03	0-3.5m	0-10m	±0.1%
	04	0-10m	0-15m	±0.1%

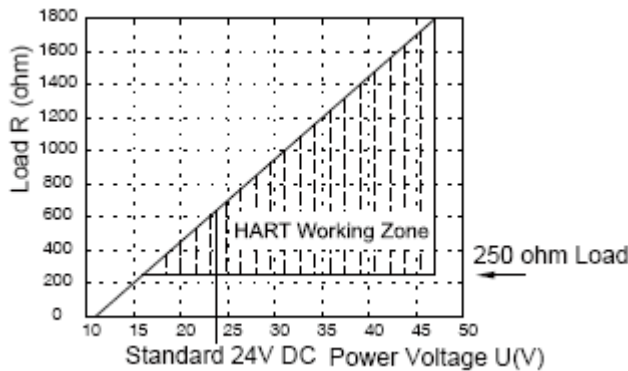
Maximum overload: 2 times of the upper limit value of the maximum measurement scope
Where: for the product with the code No.10, the maximum overload is 70 Mpa



Over –pressure effect: less than 0.25% of the maximum range
 Measurement agent: all kinds of agents matched with stainless steel 316
 Output: 4-20mA ADC (2-wire)
 Working voltage: 14-36VDC, standard 24VDC 5% with ripple less than 1%
 Environment temperature:-20-85°C
 Agent temperature: -25-100°C
 Storage temperature: -40-125°C
 Relative temperature: 0-100%
 Diaphragm material: stainless steel 316
 Probe/connector material: 1Cr 18 Ni9Ti
 Electronic housing: aluminum alloy (spay painting with plastic)
 Process port: M20×1.5 or NPT1/2 outer screw (3351DPT2001)
 Electrical port: NPT1/2 load resistance of cable sealed connector (4-20mA):

$$R = \frac{U - 14}{0.02} - R_d$$

Where: U is power voltage, Rd is cable internal resistance



Load Resistance (0-10mA): $\leq 1K\Omega$
 Load resistance (0-5V): $\geq 300\Omega$
 Insulating resistance: $\geq 200M \Omega/50VDC$
 Zero point transfer: 0%--100 % (3351DPT2318 is 80%) of the maximum range
 Negative transfer (3351DPT 2001): 0%---100 % (3351DPT2318 is 80% Of the maximum range (no more than-100kPa, absolute pressure has no negative transfer)
 Power change effect: less than 0.01%/V of output range
 Load change effect: can be ignored with the minimum voltage guaranteed
 Zero temperature coefficient: $\pm 1.5\%FS$
 Sensitivity temperature coefficient: $\pm 1.5\%FS$
 Indicator: 0-100% linear marks/digital display meter head
 Stability: $\pm 0.2\%FS/year$
 Explosion sign of intrinsically safety type product: Ex ia II CT5
 Weight: about 0.75kg (varies with different types)



A.4 Accessories

Our digital. Intelligent transmitter is attached with the following accessories for the user's convenience.

User's Manual 1 copy	qualification certificate 1 copy
Mounting Bracket 1 set	M 10 Bolt 4 pieces

(Note: direct-coupled is not attached with mounting bracket and am10 bolts)

A.5 precautions

1. Correctly wiring as per the requirements described in the instructions.
2. This product is precise measuring instrument. Do not beat it, strike it, or forcedly bind it, nor dismantle it, thrust the pressure introducing hole or mental diaphragm with sharp articles.
3. The transmitter should be mounted in a place where is ventilated, dry, free from corrosion and cool.
4. If the measurement agent is a viscid fluid or the one with floating granules, avoid the diaphragm being struck and the probe being jammed.
5. It's prohibited that the system is overloaded, exceeding the limitation stipulated in the instruction.
6. Keep the cable connectors being sealed to avoid letting in the water or humidity, which may affect the integral performance and longevity.
7. In the case of abnormal output, shut down the transmitter for a check. If it is due to the product quality problem, please bring the product with the qualification certificate back to our company for a maintenance or change.
8. With the constant improvement of the product technology, no separate notice will be given concerning the alternation of product performance.

